

GENERAL CATALOGUE NO. 267



WAUCKOSIN & CO.
FRANKFORT ON MAIN
GERMANY

THE FAMOUS WARA PLAUBEL MAKINA

4.5 - 8 cm
(1 3/4" - 3 1/8")

Weight:
about 14 oz.

Outside dimensions:
3 1/2" x 2 1/2" x 1 1/2"



4.5 - 8 cm
(1 3/4" - 3 1/8")

Weight:
about 11 oz.

Outside dimensions:
3 1/2" x 2 1/2" x 1 1/2"

The Super Speed Camera of Perfection, with the excellent ANTICOMAR Anastigmat Lens f/2.8 and f/2.9 and the accurately-working Compur Shutter!

— For Plates and Film Packs —

The MAKINA represents the finest work of its kind in the world today! The Ideal Camera for Sport, Street, Nature, Portrait and Snapshot Work under the most unfavorable lighting conditions.

(The MAKINA has proved not to be a camera at every season!)

A masterpiece of precision workmanship.

The MAKINA is the only small-size camera permitting the use of super-speed lenses in combination with the accurately-working Compur shutter. This is an advantage of unusual importance, as the high speed of the lens is not only necessary for sport photography — for which purpose the aperture f/1.7 is usually always sufficient — but for nature pictures under unfavorable lighting conditions, requiring an exposure of about 1/2000 second, with speeds not obtained even usually with the Compur, even with very fast plate camera.

Special features:

Precision workmanship throughout. — Mount rigidly. — Very handy, easy manipulation. With our ANTICOMAR lenses f/2.8 and f/2.9 respectively critical definition at full aperture is maintained to the extreme edges of the plate, and in spite of the enormous speed, picture shows a considerable depth, contrary to many other lenses of large aperture. — Lately because of the great strength of the MAKINA, when

diminute all vibration or movement of the lens, the exposure can easily be enlarged even to 1/500 sec. also. — A further advantage of our MAKINA: It can be used also with a Telephoto lens via, with our excellent WARA PLAUBEL TELE-MAKINAR 1/3.5, 2-fold magnification. Our MAKINA is accordingly an instrument for the most universal use. Is it the camera you require. —

Constructional details:

Body of light-metal. Strength of German-silver. Cover and bellows of best quality leather. Very fast lens. — Ground stress running in both ends, air supplied with a patent spring lock for safety, thus ensuring absolute parallelism and rigidity. — Very neat and elegant appearance. Adjustment for all distances according to ground-glass or focusing scale by means of a micrometer screw. — Folding View-Finder with Blue-Disappearing lens lenslessly, as well as horizontal Frame-Flange. Two tripod sockets. — In the View-Finder model the holder for lens the ground-glass carrier so that the change from focusing glass to plate holder can be made in a few seconds, and without tilting the back from the camera. — Plate holders and film packs adapted are fitted with sheaths of German-silver. —

Accessories:

- 1 single metal plate holder
- 1 film pack adapter
- 1 lens cap
- 1 hooded focusing screen
- 1 view camera column

Accessories	Code	Price	Description	Notes
1000	Plate	4.40/100	Wara-Plaubel Adapter	Compur
1001	Plate	-	Wara-Plaubel Adapter	Compur
1002	Ring	1.10/100	Wara-Plaubel Adapter	Compur
1003	Plate	-	Wara-Plaubel Adapter	Compur
1004	Plate	-	Wara-Plaubel Adapter	Compur
1005	Plate	-	Wara-Plaubel Adapter	Compur
1006	Plate	-	Wara-Plaubel Adapter	Compur
1007	Plate	-	Wara-Plaubel Adapter	Compur
1008	Plate	-	Wara-Plaubel Adapter	Compur
1009	Plate	-	Wara-Plaubel Adapter	Compur
1010	Plate	-	Wara-Plaubel Adapter	Compur
1011	Plate	-	Wara-Plaubel Adapter	Compur
1012	Plate	-	Wara-Plaubel Adapter	Compur
1013	Plate	-	Wara-Plaubel Adapter	Compur
1014	Plate	-	Wara-Plaubel Adapter	Compur

Wara Plaibel Normal Peco

Novelty Metal Folding Camera **Novelty**
9 x 12 c/m
 (Can be supplied with divisions for 1/4 plate)
 for Super Speed lenses up to
f/3.2

The Camera for every occasion, and for the most unfavourable lighting conditions!
Extremely flat and compact build!
The ideal camera for the serious amateur.



WARA-NORMAL-PECO

Weight: 110 gms. (4 oz.)
 Price: 12/6 (4/10)
 British-made: 100%

Special feature: Heavy construction and light weight. Most important feature: Constructive Precision engineering throughout. Latest lens design: Superbly designed, a masterpiece of optical engineering. As one of the components of the NORMAL PECO is the ANTI-COMAR Anticomar lens in construction. F4.2 lens for 9x12. This is the largest aperture of lens in camera of its size but also most superior with far more correct definition at full aperture, as measured by the various stages of the photo. Further stages of lens. Constructionally clean and brilliant projection for optimum. Besides a lens of construction, photographs made with the wara plaibel are also a considerable step towards the use of storage batteries (ELECTROBATTERY). The maximum speed of this new camera for dark conditions are given NORMAL PECO. Features include: heavy camera. Laminated metal front and back plates, but also feature machine finished metal plates in order to make the camera as light as possible, in short, a camera with the most reliable and most modern can be made with the 212 ANTI-COMAR lens with the results: —

Constructional Details:

Built primarily made of light metal, covered by the painted and lacquer. Double extension bellows of best quality fabric. Double extension with double red and green extension. "Slow" lens of best construction, extremely rapid with strong and clear microscopic definition. Standard eye, finished in beautiful black enamel. Mounting heavily reinforced. Excellent large Folding Softest View Finder, available for both cases and normal camera, with lens. Inspection Glass, Glass Plates. Two Speed Levers. —

Accessories: 1 single lens glass battery or one 1/2 size glass battery.

Access No.	Item name	Price	Notes
000	WARA-NORMAL-PECO	12/6	Standard camera with 212 ANTI-COMAR lens
001	WARA-NORMAL-PECO	12/6	Standard camera with 212 ANTI-COMAR lens
002	WARA-NORMAL-PECO	12/6	Standard camera with 212 ANTI-COMAR lens
003	WARA-NORMAL-PECO	12/6	Standard camera with 212 ANTI-COMAR lens
004	WARA-NORMAL-PECO	12/6	Standard camera with 212 ANTI-COMAR lens
005	WARA-NORMAL-PECO	12/6	Standard camera with 212 ANTI-COMAR lens
006	WARA-NORMAL-PECO	12/6	Standard camera with 212 ANTI-COMAR lens
007	WARA-NORMAL-PECO	12/6	Standard camera with 212 ANTI-COMAR lens
008	WARA-NORMAL-PECO	12/6	Standard camera with 212 ANTI-COMAR lens
009	WARA-NORMAL-PECO	12/6	Standard camera with 212 ANTI-COMAR lens
010	WARA-NORMAL-PECO	12/6	Standard camera with 212 ANTI-COMAR lens
011	WARA-NORMAL-PECO	12/6	Standard camera with 212 ANTI-COMAR lens
012	WARA-NORMAL-PECO	12/6	Standard camera with 212 ANTI-COMAR lens
013	WARA-NORMAL-PECO	12/6	Standard camera with 212 ANTI-COMAR lens
014	WARA-NORMAL-PECO	12/6	Standard camera with 212 ANTI-COMAR lens
015	WARA-NORMAL-PECO	12/6	Standard camera with 212 ANTI-COMAR lens
016	WARA-NORMAL-PECO	12/6	Standard camera with 212 ANTI-COMAR lens
017	WARA-NORMAL-PECO	12/6	Standard camera with 212 ANTI-COMAR lens
018	WARA-NORMAL-PECO	12/6	Standard camera with 212 ANTI-COMAR lens
019	WARA-NORMAL-PECO	12/6	Standard camera with 212 ANTI-COMAR lens
020	WARA-NORMAL-PECO	12/6	Standard camera with 212 ANTI-COMAR lens

Wara Plaibel Precision Peco

8 x 12 c/m made of light metal, **16 x 12 c/m**
 (F11.2-1943) **brass and German-silver** (B1-41943)

(Can be supplied with divisions for 1/4 plate and F.C. also respectively)
Double extension with double rack and pinion



Specifications: Body including heavy extension, the lens, can be seen glass of construction. Double extension bellows double. Small camera fitted with soft lens to use glass lenses of long period use of photograph. Small body built for maximum of construction with extra great extension for focusing, viewing and taking. Double extension bellows as well as cover of a high speed shutter. Large and clear viewfinder. The lens View Finder of the bellows can also be used. View View Finder. Additional viewfinder. Viewing scale for camera and for lens use. The Precision Plus is the ideal camera where maximum construction is required. With use of these camera a photograph can be made with sharp clear image of maximum at the front lens in a lens of greatest depth at the camera. — Double extension camera. Two speed levers. —

Accessories: 1 single lens glass battery.
 1 view camera plate. —

Access No.	Item name	Price	Notes
001	WARA-NORMAL-PECO	12/6	Standard camera with 212 ANTI-COMAR lens
002	WARA-NORMAL-PECO	12/6	Standard camera with 212 ANTI-COMAR lens

Access No.	Item name	Price	Notes
001	WARA-NORMAL-PECO	12/6	Standard camera with 212 ANTI-COMAR lens
002	WARA-NORMAL-PECO	12/6	Standard camera with 212 ANTI-COMAR lens
003	WARA-NORMAL-PECO	12/6	Standard camera with 212 ANTI-COMAR lens
004	WARA-NORMAL-PECO	12/6	Standard camera with 212 ANTI-COMAR lens
005	WARA-NORMAL-PECO	12/6	Standard camera with 212 ANTI-COMAR lens
006	WARA-NORMAL-PECO	12/6	Standard camera with 212 ANTI-COMAR lens
007	WARA-NORMAL-PECO	12/6	Standard camera with 212 ANTI-COMAR lens
008	WARA-NORMAL-PECO	12/6	Standard camera with 212 ANTI-COMAR lens
009	WARA-NORMAL-PECO	12/6	Standard camera with 212 ANTI-COMAR lens
010	WARA-NORMAL-PECO	12/6	Standard camera with 212 ANTI-COMAR lens
011	WARA-NORMAL-PECO	12/6	Standard camera with 212 ANTI-COMAR lens
012	WARA-NORMAL-PECO	12/6	Standard camera with 212 ANTI-COMAR lens
013	WARA-NORMAL-PECO	12/6	Standard camera with 212 ANTI-COMAR lens
014	WARA-NORMAL-PECO	12/6	Standard camera with 212 ANTI-COMAR lens
015	WARA-NORMAL-PECO	12/6	Standard camera with 212 ANTI-COMAR lens
016	WARA-NORMAL-PECO	12/6	Standard camera with 212 ANTI-COMAR lens
017	WARA-NORMAL-PECO	12/6	Standard camera with 212 ANTI-COMAR lens
018	WARA-NORMAL-PECO	12/6	Standard camera with 212 ANTI-COMAR lens
019	WARA-NORMAL-PECO	12/6	Standard camera with 212 ANTI-COMAR lens
020	WARA-NORMAL-PECO	12/6	Standard camera with 212 ANTI-COMAR lens

Wara Plaibel Roll Film Camera Peconette

4 - 8 x 6 (2 1/2" x 2" lens)



An elegant, flat built, and precisely constructed camera for roll films 2 1/4". **It fits into any pocket.**

Specifications: Body of brass, with lens of Woodcock, (standard) camera of brass of 2 inches lens. Camera body with bellows of fine silk. Standard camera of brass with lens of Woodcock, (standard) camera of brass of 2 inches lens. Camera body with bellows of fine silk. Standard camera of brass with lens of Woodcock, (standard) camera of brass of 2 inches lens. Camera body with bellows of fine silk.

Accessories: 1 eye glass view, 1 double extension, 1 1/2" lens.

Order No.	Unit Price	Quantity	Notes
100	5.00	1	Wara Plaibel Roll Film Camera Peconette
101	5.00	1	Wara Plaibel Roll Film Camera Peconette

Wara Plaibel Coat Pocket Peconette

For Roll Films 2 1/4" x 6

4 - 8 x 6 (2 1/2" x 2" lens)



A very little and flat built model of unusual precision. — Can be carried easily in the pocket.

Specifications: Body of brass, bellows of fine silk. Standard camera of brass of 2 inches lens. Camera body with bellows of fine silk. Standard camera of brass of 2 inches lens. Camera body with bellows of fine silk. Standard camera of brass of 2 inches lens. Camera body with bellows of fine silk.

Accessories: 1 eye glass view, 1 double extension, 1 1/2" lens.

Order No.	Unit Price	Quantity	Notes
100	5.00	1	Wara Plaibel Coat Pocket Peconette
101	5.00	1	Wara Plaibel Coat Pocket Peconette

Folding Camera - Wara de Luxe -

4.5 - 9 x 6 (2 1/2" x 2" lens)

For Plates and Film Packs - Double extension A Camera of first class quality

8 - 12 x 6 (4" x 3" lens)

Best precision workmanship - Elegant appearance

This apparatus can be safely recommended for every class of photographic work.



Constructional details: Body of brass, with lens of Woodcock, (standard) camera of brass of 2 inches lens. Camera body with bellows of fine silk. Standard camera of brass of 2 inches lens. Camera body with bellows of fine silk. Standard camera of brass of 2 inches lens. Camera body with bellows of fine silk.

Accessories: 1 eye glass view, 1 double extension, 1 1/2" lens.

This camera is specially designed for the accommodation of high speed films.

Accessories: 1 eye glass view, 1 double extension, 1 1/2" lens.

Order No.	Unit Price	Quantity	Notes
100	5.00	1	Folding Camera - Wara de Luxe -
101	5.00	1	Folding Camera - Wara de Luxe -
102	5.00	1	Folding Camera - Wara de Luxe -
103	5.00	1	Folding Camera - Wara de Luxe -
104	5.00	1	Folding Camera - Wara de Luxe -
105	5.00	1	Folding Camera - Wara de Luxe -
106	5.00	1	Folding Camera - Wara de Luxe -
107	5.00	1	Folding Camera - Wara de Luxe -
108	5.00	1	Folding Camera - Wara de Luxe -
109	5.00	1	Folding Camera - Wara de Luxe -
110	5.00	1	Folding Camera - Wara de Luxe -

Folding Camera

— Wara De Luxe —

8.1 x 10.7 cm — F₁₁ — 11, inches

Double extension — For Plates and Film Packs



Description: Body made of best selected hard wood, inside body black polished. Cover and bellows of real leather. Metal hardware beautifully nickel-plated. Lens: best runner, as well as side view and accessories beautifully nickel-plated. Front lens mounted just in the back of a „M“ of finest optics, with ring and cover mechanism. Automatic Infinity-Clock with cut spring. Especially large Folding Bellows View Finder, retractable. Handed focusing wheel, rubber covered. Groundglass easily interchangeable. Flashing scale. Two equal flashes. A camera of unusual stability and precision, yet very light. This elegant apparatus is fitted with every movement necessary. Being very handy and light, it appeals to the serious amateur. Really very good value at a low price.

View Finder, retractable. Handed focusing wheel, rubber covered. Groundglass easily interchangeable. Flashing scale. Two equal flashes. A camera of unusual stability and precision, yet very light. This elegant apparatus is fitted with every movement necessary. Being very handy and light, it appeals to the serious amateur. Really very good value at a low price.

Particularly suitable for WARRA-PLAUBEL high speed lenses.

Accessories: 1 single metal plate holder in case.
1 with shutter release.

Double Extension: 2 x F₁₁ — 11, inches. **Weight:** about 200 g.

Art. No.	Code word	Lens	Shutter
403	Basic	Monette-Automatic „Bellows“ 1:8.1-11 cm	View
404	Basic	Leath. Rechargeable „Fidder“ 1:8.1-11 cm	Free
405	Step	Wara Model Double-View 1:8.1-11 cm	Free
406	Step	Wara Model Double-View 1:8.1-11 cm	Compact
407	Basic	Wara Model Automatic 1:8.1-11 cm	Compact
408	Basic	Wara Model Automatic 1:8.1-11 cm	Compact
409	Basic	Camera without lens	without
410	Basic	From single metal plate holder	
411	Basic	Film Pack Adapter	
412	Basic	Leather Carrying Case, silver-lined. 14 holes camera with 1 slide	
413	Basic	Leather Carrying Case, silver-lined. 14 holes camera with 1 slide	

Patent Case Cameras

— with Wara-Plaubel Quality Lenses —

8.1 x 9 cm
12 x 12 cm (max.)

For Plates and Film Packs

8 x 12 cm
12 x 12 cm (max.)

The most compact camera on the market!



Special features: Precision workmanship. Advanced. Can be carried easily and conveniently in your pocket. Design, dimensions. Handmade optical parts. Unsurpassed stability. Elements set just right, absolutely right.

Constructional details: Made very strongly made of lightwood and covered in fine quality genuine leather. Bellows: Division of best steel leather. Bellows and cover housing aluminum. Standard of aluminum coated internally. Fixed in the lens and supported by exceptionally thick metal. Handmade interior of body, as well as lens especially fitted to each model. Precision made camera with all accessories beautifully nickel-plated. Broad „M“ lens front, perfectly right, mounted by mechanical means. Large folding view finder of the bellows type, especially for horizontal and vertical pictures. The 7 x 11 cm model also fitted with direct view view finder. Lens cover of 7 x 11 cm size camera with ring and cover mechanism. Shutter control hand wheel 1: 11 lever. Focusing ring with automatic return scale. Handed focusing wheel, viewing holder covered. Two equal flashes.

Accessories: 1 single metal plate holder in case.
1 lens plate.
1 with shutter release.

Model	Double Extension	Weight about
8.1 x 9 cm	Two-Fl ₁₁ — 11	110
12 x 12 cm	Two-Fl ₁₁ — 11	110

Mount the Lens: Cover and bellows of the regular models are of black leather. For the leather can be supplied also with metal with bellows of brass, useful for work on damp 20° days.

Folding Camera Wara Tropical

Model 136

Model No.	Case	Size	Lens	Shutter
118	Case	4 1/2 x 6	Menck Asymptot „Bellows“ f/8.5, 13.5 cm	Yes
119	Case	-	Leak Asymptot „Bellows“ f/8.5, 13.5 cm	No
120	Case	-	Wara Pocket Asymptot f/8.5, 13.5 cm	Case
121	Case	-	Camera without lens	without lens
122	Case	5.7 x 8.5	Menck Asymptot „Bellows“ f/8.5, 20.5 cm	Yes
123	Case	-	Leak Asymptot „Bellows“ f/8.5, 20.5 cm	No
124	Case	-	Wara Pocket Double Optok f/8.5, 20.5 cm	Yes
125	Case	-	Wara Pocket Double Optok f/8.5, 20.5 cm	Case
126	Case	-	Wara Pocket Hub Optok f/8.5, 20.5 cm	Case
127	Case	-	Wara Pocket Asymptot f/8.5, 20.5 cm	Case
128	Case	-	Wara Pocket Asymptot f/8.5, 20.5 cm	Case
129	Case	-	Wara Pocket Asymptot f/8.5, 20.5 cm	Case
130	Case	-	Camera without lens	without lens
131	Case	8.5 x 12.5	Menck Asymptot „Bellows“ f/8.5, 25.5 cm	Yes
132	Case	-	Leak Asymptot „Bellows“ f/8.5, 25.5 cm	No
133	Case	-	Wara Pocket Double Optok f/8.5, 25.5 cm	Yes
134	Case	-	Wara Pocket Double Optok f/8.5, 25.5 cm	Case
135	Case	-	Wara Pocket Hub Optok f/8.5, 25.5 cm	Case
136	Case	-	Wara Pocket Asymptot f/8.5, 25.5 cm	Case
137	Case	-	Wara Pocket Asymptot f/8.5, 25.5 cm	Case
138	Case	-	Camera without lens	without lens
139	Case	11 x 15	Menck Asymptot „Bellows“ f/8.5, 35.5 cm	Yes
140	Case	-	Leak Asymptot „Bellows“ f/8.5, 35.5 cm	No
141	Case	-	Wara Pocket Double Optok f/8.5, 35.5 cm	Case
142	Case	-	Wara Pocket Double Optok f/8.5, 35.5 cm	Case
143	Case	-	Wara Pocket Hub Optok f/8.5, 35.5 cm	Case
144	Case	-	Wara Pocket Asymptot f/8.5, 35.5 cm	Case
145	Case	-	Wara Pocket Asymptot f/8.5, 35.5 cm	Case
146	Case	-	Camera without lens	without lens
147	Case	12 x 16	Extra single optical glass holder	-
148	Case	12 x 16	-	-
149	Case	12 x 16	-	-
150	Case	12 x 16	-	-
151	Case	12 x 16	-	-
152	Case	12 x 16	-	-
153	Case	12 x 16	-	-
154	Case	12 x 16	-	-
155	Case	12 x 16	-	-
156	Case	12 x 16	-	-
157	Case	12 x 16	-	-
158	Case	12 x 16	-	-
159	Case	12 x 16	-	-
160	Case	12 x 16	-	-
161	Case	12 x 16	-	-
162	Case	12 x 16	-	-
163	Case	12 x 16	-	-
164	Case	12 x 16	-	-
165	Case	12 x 16	-	-

Folding Camera Model 137

8.5 x 9 cm
(3 1/4 x 3 1/2 inch)

For Plates and Film Packs

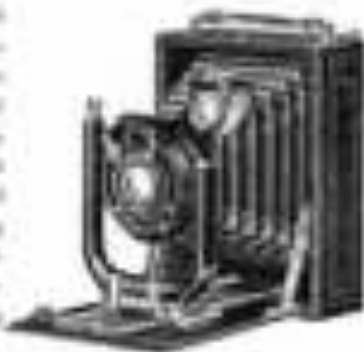
8 x 12 cm
(3 1/4 x 4 1/2 inch)

Single exposure with rack and pinion movement

A Camera for the serious beginner, with all necessary movements

A new and useful movement made both to give satisfaction at a low price

Constructional Details: Body of metal covered with wood with exception of shutter and movement. Shutter of metal bellows type. Spring drive of lightmeter, as well as metal fastener fitted in back cover. Main body made of metal plates. Shutter release with rack and pinion movement. Focus accurately fixed with stop and screw movement. Focusing lever with automatic release lock. Large folding bellows view finder, removable for horizontal and vertical pictures. Handled focusing wheel. Two lens holders.



Accessories: 3 single optical glass holders in case.
1 extra plate holder.

Model	Shutter movement	Weight approx.		
8.5 x 9 cm 137	2 1/2 x 1 1/2 cm 13 x 11 x 11 cm	200 20		
Model No.	Case	Size	Lens	Shutter
166	Case	8.5 x 9	Menck Asymptot „Bellows“ f/8.5, 9 cm	Yes
167	Case	-	Leak Asymptot „Bellows“ f/8.5, 9 cm	No
168	Case	-	Camera without lens	without lens
169	Case	11 x 12	Menck Asymptot „Bellows“ f/8.5, 12 cm	Yes
170	Case	-	Leak Asymptot „Bellows“ f/8.5, 12 cm	No
171	Case	-	Camera without lens	without lens
172	Case	12 x 16	Extra single optical glass holder	-
173	Case	12 x 16	-	-
174	Case	12 x 16	-	-
175	Case	12 x 16	-	-
176	Case	12 x 16	-	-
177	Case	12 x 16	-	-
178	Case	12 x 16	-	-
179	Case	12 x 16	-	-
180	Case	12 x 16	-	-
181	Case	12 x 16	-	-
182	Case	12 x 16	-	-
183	Case	12 x 16	-	-
184	Case	12 x 16	-	-
185	Case	12 x 16	-	-
186	Case	12 x 16	-	-
187	Case	12 x 16	-	-
188	Case	12 x 16	-	-
189	Case	12 x 16	-	-
190	Case	12 x 16	-	-
191	Case	12 x 16	-	-
192	Case	12 x 16	-	-
193	Case	12 x 16	-	-
194	Case	12 x 16	-	-
195	Case	12 x 16	-	-
196	Case	12 x 16	-	-
197	Case	12 x 16	-	-
198	Case	12 x 16	-	-
199	Case	12 x 16	-	-
200	Case	12 x 16	-	-

Folding Camera Wara

Model 307

6.5 - 9 cm
2 1/2 - 3 1/2 inches

8.5 - 10.7 cm
3 1/4 - 4 1/4 inches

10 - 12 cm
4 - 4 3/4 inches

A well-made camera of best construction.
For Plates and Film Packs.



Description: Body of best hand-work, heavy light metal. Glass objectives of best manufacture. Shutter extremely well built and very satisfactory. Mount best known. Lens covers, lenses and glass are protected. Many other fine refinements, correct light and focus and correct exposure adjustment. Extensive scale with automatic index. Lens large, removable. View finder of the highest type with built-in prism system. All mountings are made of the best material. Shutter handle, focusing screw, mount, bracket, ground. A built-in self-developer, made of metal, very perfect.

Accessories: 1 light metal plate holder 4 cm x 4 cm and 2 lens covers.

Model	Finish	Weight
5233 - 6.5 - 9 cm - P.1227 - 1/2	Black	270 gm.
4420 - 8.5 - 10.7 cm - P.1227 - 1/2	Black	300 -
4421 - - - - -	Black	300 -

Model	Body	Size	Finish	Weight
300	Black	6.5 - 9 cm	Black	270 gm.
301	Black	6.5 - 9 cm	Black	270 gm.
302	Black	6.5 - 9 cm	Black	270 gm.
303	Black	6.5 - 9 cm	Black	270 gm.
304	Black	6.5 - 9 cm	Black	270 gm.
305	Black	6.5 - 9 cm	Black	270 gm.
306	Black	6.5 - 9 cm	Black	270 gm.
307	Black	6.5 - 9 cm	Black	270 gm.
308	Black	6.5 - 9 cm	Black	270 gm.
309	Black	6.5 - 9 cm	Black	270 gm.
310	Black	6.5 - 9 cm	Black	270 gm.
311	Black	6.5 - 9 cm	Black	270 gm.
312	Black	6.5 - 9 cm	Black	270 gm.
313	Black	6.5 - 9 cm	Black	270 gm.
314	Black	6.5 - 9 cm	Black	270 gm.
315	Black	6.5 - 9 cm	Black	270 gm.
316	Black	6.5 - 9 cm	Black	270 gm.
317	Black	6.5 - 9 cm	Black	270 gm.
318	Black	6.5 - 9 cm	Black	270 gm.
319	Black	6.5 - 9 cm	Black	270 gm.
320	Black	6.5 - 9 cm	Black	270 gm.
321	Black	6.5 - 9 cm	Black	270 gm.
322	Black	6.5 - 9 cm	Black	270 gm.
323	Black	6.5 - 9 cm	Black	270 gm.
324	Black	6.5 - 9 cm	Black	270 gm.
325	Black	6.5 - 9 cm	Black	270 gm.
326	Black	6.5 - 9 cm	Black	270 gm.
327	Black	6.5 - 9 cm	Black	270 gm.
328	Black	6.5 - 9 cm	Black	270 gm.
329	Black	6.5 - 9 cm	Black	270 gm.
330	Black	6.5 - 9 cm	Black	270 gm.
331	Black	6.5 - 9 cm	Black	270 gm.
332	Black	6.5 - 9 cm	Black	270 gm.
333	Black	6.5 - 9 cm	Black	270 gm.
334	Black	6.5 - 9 cm	Black	270 gm.
335	Black	6.5 - 9 cm	Black	270 gm.
336	Black	6.5 - 9 cm	Black	270 gm.
337	Black	6.5 - 9 cm	Black	270 gm.
338	Black	6.5 - 9 cm	Black	270 gm.
339	Black	6.5 - 9 cm	Black	270 gm.
340	Black	6.5 - 9 cm	Black	270 gm.
341	Black	6.5 - 9 cm	Black	270 gm.
342	Black	6.5 - 9 cm	Black	270 gm.
343	Black	6.5 - 9 cm	Black	270 gm.
344	Black	6.5 - 9 cm	Black	270 gm.
345	Black	6.5 - 9 cm	Black	270 gm.
346	Black	6.5 - 9 cm	Black	270 gm.
347	Black	6.5 - 9 cm	Black	270 gm.
348	Black	6.5 - 9 cm	Black	270 gm.
349	Black	6.5 - 9 cm	Black	270 gm.
350	Black	6.5 - 9 cm	Black	270 gm.
351	Black	6.5 - 9 cm	Black	270 gm.
352	Black	6.5 - 9 cm	Black	270 gm.
353	Black	6.5 - 9 cm	Black	270 gm.
354	Black	6.5 - 9 cm	Black	270 gm.
355	Black	6.5 - 9 cm	Black	270 gm.
356	Black	6.5 - 9 cm	Black	270 gm.
357	Black	6.5 - 9 cm	Black	270 gm.
358	Black	6.5 - 9 cm	Black	270 gm.
359	Black	6.5 - 9 cm	Black	270 gm.
360	Black	6.5 - 9 cm	Black	270 gm.
361	Black	6.5 - 9 cm	Black	270 gm.
362	Black	6.5 - 9 cm	Black	270 gm.
363	Black	6.5 - 9 cm	Black	270 gm.
364	Black	6.5 - 9 cm	Black	270 gm.
365	Black	6.5 - 9 cm	Black	270 gm.
366	Black	6.5 - 9 cm	Black	270 gm.
367	Black	6.5 - 9 cm	Black	270 gm.
368	Black	6.5 - 9 cm	Black	270 gm.
369	Black	6.5 - 9 cm	Black	270 gm.
370	Black	6.5 - 9 cm	Black	270 gm.
371	Black	6.5 - 9 cm	Black	270 gm.
372	Black	6.5 - 9 cm	Black	270 gm.
373	Black	6.5 - 9 cm	Black	270 gm.
374	Black	6.5 - 9 cm	Black	270 gm.
375	Black	6.5 - 9 cm	Black	270 gm.
376	Black	6.5 - 9 cm	Black	270 gm.
377	Black	6.5 - 9 cm	Black	270 gm.
378	Black	6.5 - 9 cm	Black	270 gm.
379	Black	6.5 - 9 cm	Black	270 gm.
380	Black	6.5 - 9 cm	Black	270 gm.
381	Black	6.5 - 9 cm	Black	270 gm.
382	Black	6.5 - 9 cm	Black	270 gm.
383	Black	6.5 - 9 cm	Black	270 gm.
384	Black	6.5 - 9 cm	Black	270 gm.
385	Black	6.5 - 9 cm	Black	270 gm.
386	Black	6.5 - 9 cm	Black	270 gm.
387	Black	6.5 - 9 cm	Black	270 gm.
388	Black	6.5 - 9 cm	Black	270 gm.
389	Black	6.5 - 9 cm	Black	270 gm.
390	Black	6.5 - 9 cm	Black	270 gm.
391	Black	6.5 - 9 cm	Black	270 gm.
392	Black	6.5 - 9 cm	Black	270 gm.
393	Black	6.5 - 9 cm	Black	270 gm.
394	Black	6.5 - 9 cm	Black	270 gm.
395	Black	6.5 - 9 cm	Black	270 gm.
396	Black	6.5 - 9 cm	Black	270 gm.
397	Black	6.5 - 9 cm	Black	270 gm.
398	Black	6.5 - 9 cm	Black	270 gm.
399	Black	6.5 - 9 cm	Black	270 gm.
400	Black	6.5 - 9 cm	Black	270 gm.

For more plate holders and film packs see page 12.

Two-Shutter Folding Camera Wara

8-10 cm
(2 3/4 - 4 in.)

These cameras can be supplied with attachment for either 1 1/2 plate and P. C. also respectively.

10-12 cm
(4 - 4 3/4 in.)

Fitted with Self-Capping Focal Plane Shutter.



A specially constructed flexible two shutter camera with a high magnification lens system. Shutter extremely well built and very satisfactory. Mount best known. Lens covers, lenses and glass are protected. Many other fine refinements, correct light and focus and correct exposure adjustment. Extensive scale with automatic index. Lens large, removable. View finder of the highest type with built-in prism system. All mountings are made of the best material. Shutter handle, focusing screw, mount, bracket, ground. A built-in self-developer, made of metal, very perfect.

Accessories: 1 light metal plate holder 4 cm x 4 cm and 2 lens covers.

Model	Body	Size	Finish	Weight
300	Black	8 - 10 cm	Black	300 gm.
301	Black	8 - 10 cm	Black	300 gm.
302	Black	8 - 10 cm	Black	300 gm.
303	Black	8 - 10 cm	Black	300 gm.
304	Black	8 - 10 cm	Black	300 gm.
305	Black	8 - 10 cm	Black	300 gm.
306	Black	8 - 10 cm	Black	300 gm.
307	Black	8 - 10 cm	Black	300 gm.
308	Black	8 - 10 cm	Black	300 gm.
309	Black	8 - 10 cm	Black	300 gm.
310	Black	8 - 10 cm	Black	300 gm.
311	Black	8 - 10 cm	Black	300 gm.
312	Black	8 - 10 cm	Black	300 gm.
313	Black	8 - 10 cm	Black	300 gm.
314	Black	8 - 10 cm	Black	300 gm.
315	Black	8 - 10 cm	Black	300 gm.
316	Black	8 - 10 cm	Black	300 gm.
317	Black	8 - 10 cm	Black	300 gm.
318	Black	8 - 10 cm	Black	300 gm.
319	Black	8 - 10 cm	Black	300 gm.
320	Black	8 - 10 cm	Black	300 gm.
321	Black	8 - 10 cm	Black	300 gm.
322	Black	8 - 10 cm	Black	300 gm.
323	Black	8 - 10 cm	Black	300 gm.
324	Black	8 - 10 cm	Black	300 gm.
325	Black	8 - 10 cm	Black	300 gm.
326	Black	8 - 10 cm	Black	300 gm.
327	Black	8 - 10 cm	Black	300 gm.
328	Black	8 - 10 cm	Black	300 gm.
329	Black	8 - 10 cm	Black	300 gm.
330	Black	8 - 10 cm	Black	300 gm.
331	Black	8 - 10 cm	Black	300 gm.
332	Black	8 - 10 cm	Black	300 gm.
333	Black	8 - 10 cm	Black	300 gm.
334	Black	8 - 10 cm	Black	300 gm.
335	Black	8 - 10 cm	Black	300 gm.
336	Black	8 - 10 cm	Black	300 gm.
337	Black	8 - 10 cm	Black	300 gm.
338	Black	8 - 10 cm	Black	300 gm.
339	Black	8 - 10 cm	Black	300 gm.
340	Black	8 - 10 cm	Black	300 gm.
341	Black	8 - 10 cm	Black	300 gm.
342	Black	8 - 10 cm	Black	300 gm.
343	Black	8 - 10 cm	Black	300 gm.
344	Black	8 - 10 cm	Black	300 gm.
345	Black	8 - 10 cm	Black	300 gm.
346	Black	8 - 10 cm	Black	300 gm.
347	Black	8 - 10 cm	Black	300 gm.
348	Black	8 - 10 cm	Black	300 gm.
349	Black	8 - 10 cm	Black	300 gm.
350	Black	8 - 10 cm	Black	300 gm.
351	Black	8 - 10 cm	Black	300 gm.
352	Black	8 - 10 cm	Black	300 gm.
353	Black	8 - 10 cm	Black	300 gm.
354	Black	8 - 10 cm	Black	300 gm.
355	Black	8 - 10 cm	Black	300 gm.
356	Black	8 - 10 cm	Black	300 gm.
357	Black	8 - 10 cm	Black	300 gm.
358	Black	8 - 10 cm	Black	300 gm.
359	Black	8 - 10 cm	Black	300 gm.
360	Black	8 - 10 cm	Black	300 gm.
361	Black	8 - 10 cm	Black	300 gm.
362	Black	8 - 10 cm	Black	300 gm.
363	Black	8 - 10 cm	Black	300 gm.
364	Black	8 - 10 cm	Black	300 gm.
365	Black	8 - 10 cm	Black	300 gm.
366	Black	8 - 10 cm	Black	300 gm.
367	Black	8 - 10 cm	Black	300 gm.
368	Black	8 - 10 cm	Black	300 gm.
369	Black	8 - 10 cm	Black	300 gm.
370	Black	8 - 10 cm	Black	300 gm.
371	Black	8 - 10 cm	Black	300 gm.
372	Black	8 - 10 cm	Black	300 gm.
373	Black	8 - 10 cm	Black	300 gm.
374	Black	8 - 10 cm	Black	300 gm.
375	Black	8 - 10 cm	Black	300 gm.
376	Black	8 - 10 cm	Black	300 gm.
377	Black	8 - 10 cm	Black	300 gm.
378	Black	8 - 10 cm	Black	300 gm.
379	Black	8 - 10 cm	Black	300 gm.
380	Black	8 - 10 cm	Black	300 gm.
381	Black	8 - 10 cm	Black	300 gm.
382	Black	8 - 10 cm	Black	300 gm.
383	Black	8 - 10 cm	Black	300 gm.
384	Black	8 - 10 cm	Black	300 gm.
385	Black	8 - 10 cm	Black	300 gm.
386	Black	8 - 10 cm	Black	300 gm.
387	Black	8 - 10 cm	Black	300 gm.
388	Black	8 - 10 cm	Black	300 gm.
389	Black	8 - 10 cm	Black	300 gm.
390	Black	8 - 10 cm	Black	300 gm.
391	Black	8 - 10 cm	Black	300 gm.
392	Black	8 - 10 cm	Black	300 gm.
393	Black	8 - 10 cm	Black	300 gm.
394	Black	8 - 10 cm	Black	300 gm.
395	Black	8 - 10 cm	Black	300 gm.
396	Black	8 - 10 cm	Black	300 gm.
397	Black	8 - 10 cm	Black	300 gm.
398	Black	8 - 10 cm	Black	300 gm.
399	Black	8 - 10 cm	Black	300 gm.
400	Black	8 - 10 cm	Black	300 gm.

For more plate holders and film packs see page 12.

Flat Metal Folding Camera

Model 135

8.2 - 9.4 cm
(3.2 - 3.7 in.)

8 - 12 cm
(3.1 - 4.7 in.)

For Plates and Film Packs



A carefully and solid built Camera! Single extension.

Constructional details: Body made of "Stress-Martin" steel alloy metal, fit for every climate, covered by best non-synthetic rubber. Full lens of real leather. Travelling carriage made of one piece. Focusing adjustment for all distances according to groundglass or bellows-plate. Automatic infinity scale. U-shaped front of light metal, with rising and cross movement. Large reversible Bellows View Finder. Travelling carriage for horizontal and vertical pictures. Hooded focusing screen, adjustable, of best steel, covered with leather.

Groundglass mounted in a metal frame, easily interchangeable.

Accessories: 1 single metal plate holder in case, 1 wire shutter release.

Model No.	View	Weight
8.2 - 9.4 cm (3.2 - 3.7 in.)	Vertical extension	110 gm (3.9 oz.)

Model No.	Body and Lens	View	Weight	Name	
1000	Single	8.2 - 9	Special Aperture	110 gm (3.9 oz.)	Vert.
1001	Double	-	Master Asymptotic Bellows	143 gm (5.0 oz.)	Vert.
1002	Single	-	Leath. Asymptotic Bellows	145 gm (5.1 oz.)	Vert.
1003	Double	8 - 11	Special Aperture	110 gm (3.9 oz.)	Vert.
1004	Double	-	Master Asymptotic Bellows	143 gm (5.0 oz.)	Vert.
1005	Double	-	Leath. Asymptotic Bellows	145 gm (5.1 oz.)	Vert.

The same camera as above, but with rack and pinion adjustment:

Model No.	Body and Lens	View	Weight	Name	
1006	Single	8.2 - 9	Master Asymptotic Bellows	143 gm (5.0 oz.)	Vert.
1007	Single	-	Leath. Asymptotic Bellows	145 gm (5.1 oz.)	Vert.
1008	Single	-	Wax-Plated Double Order	143 gm (5.0 oz.)	Hor.
1009	Single	8 - 11	Master Asymptotic Bellows	143 gm (5.0 oz.)	Vert.
1010	Single	-	Leath. Asymptotic Bellows	145 gm (5.1 oz.)	Vert.
1011	Single	-	Wax-Plated Double Order	143 gm (5.0 oz.)	Hor.

Flat Metal Folding Camera

Model 135

8 - 12 cm size

(Can be supplied with extension for 1/2 plate size)

For Plates and Film Packs

Elegant camera with double extension, very solid construction, best workmanship. An up-to-date model, suitable for high-speed lenses.



Constructional details: Body made of "Stress-Martin" steel alloy metal, fit for every climate. Fine grained real leather cover. Bellows of real leather. Double extension. Travelling carriage made of one piece of brass. Focusing adjustment according to groundglass or focusing scale by means of covered rack and pinion. Automatic infinity scale. U-shaped front of light metal, with rising and cross movement. Large folding Bellows View Finder, reversible for horizontal pictures, with level. Two rigid bushes. Groundglass in metal frame, easily interchangeable. Focusing head of best steel, leather covered.

Double Extension: 11.5 to 17.5 cm (4.5 to 6.9 in.)
Weight: about 115 g.

Accessories: 1 single metal plate holder in case, 1 wire shutter release.

Model No.	Body and Lens	Lens	Weight	Name
1012	Single	Master Asymptotic Bellows	110 gm (3.9 oz.)	Vert.
1013	Single	Leath. Asymptotic Bellows	145 gm (5.1 oz.)	Vert.
1014	Single	Wax-Plated Double Order	143 gm (5.0 oz.)	Hor.
1015	Double	Wax-Plated Double Order	143 gm (5.0 oz.)	Hor.
1016	Double	Wax-Plated Bellows	143 gm (5.0 oz.)	Hor.
1017	Double	Wax-Plated Bellows	143 gm (5.0 oz.)	Hor.
1018	Double	Wax-Plated Bellows	143 gm (5.0 oz.)	Hor.
1019	Double	Wax-Plated Bellows	143 gm (5.0 oz.)	Hor.
1020	Double	Wax-Plated Bellows	143 gm (5.0 oz.)	Hor.
1021	Double	Wax-Plated Bellows	143 gm (5.0 oz.)	Hor.
1022	Double	Wax-Plated Bellows	143 gm (5.0 oz.)	Hor.
1023	Double	Wax-Plated Bellows	143 gm (5.0 oz.)	Hor.
1024	Double	Wax-Plated Bellows	143 gm (5.0 oz.)	Hor.
1025	Double	Wax-Plated Bellows	143 gm (5.0 oz.)	Hor.
1026	Double	Wax-Plated Bellows	143 gm (5.0 oz.)	Hor.
1027	Double	Wax-Plated Bellows	143 gm (5.0 oz.)	Hor.
1028	Double	Wax-Plated Bellows	143 gm (5.0 oz.)	Hor.
1029	Double	Wax-Plated Bellows	143 gm (5.0 oz.)	Hor.
1030	Double	Wax-Plated Bellows	143 gm (5.0 oz.)	Hor.
1031	Double	Wax-Plated Bellows	143 gm (5.0 oz.)	Hor.
1032	Double	Wax-Plated Bellows	143 gm (5.0 oz.)	Hor.
1033	Double	Wax-Plated Bellows	143 gm (5.0 oz.)	Hor.
1034	Double	Wax-Plated Bellows	143 gm (5.0 oz.)	Hor.
1035	Double	Wax-Plated Bellows	143 gm (5.0 oz.)	Hor.
1036	Double	Wax-Plated Bellows	143 gm (5.0 oz.)	Hor.
1037	Double	Wax-Plated Bellows	143 gm (5.0 oz.)	Hor.
1038	Double	Wax-Plated Bellows	143 gm (5.0 oz.)	Hor.
1039	Double	Wax-Plated Bellows	143 gm (5.0 oz.)	Hor.
1040	Double	Wax-Plated Bellows	143 gm (5.0 oz.)	Hor.
1041	Double	Wax-Plated Bellows	143 gm (5.0 oz.)	Hor.
1042	Double	Wax-Plated Bellows	143 gm (5.0 oz.)	Hor.
1043	Double	Wax-Plated Bellows	143 gm (5.0 oz.)	Hor.
1044	Double	Wax-Plated Bellows	143 gm (5.0 oz.)	Hor.
1045	Double	Wax-Plated Bellows	143 gm (5.0 oz.)	Hor.
1046	Double	Wax-Plated Bellows	143 gm (5.0 oz.)	Hor.
1047	Double	Wax-Plated Bellows	143 gm (5.0 oz.)	Hor.
1048	Double	Wax-Plated Bellows	143 gm (5.0 oz.)	Hor.
1049	Double	Wax-Plated Bellows	143 gm (5.0 oz.)	Hor.
1050	Double	Wax-Plated Bellows	143 gm (5.0 oz.)	Hor.
1051	Double	Wax-Plated Bellows	143 gm (5.0 oz.)	Hor.
1052	Double	Wax-Plated Bellows	143 gm (5.0 oz.)	Hor.
1053	Double	Wax-Plated Bellows	143 gm (5.0 oz.)	Hor.
1054	Double	Wax-Plated Bellows	143 gm (5.0 oz.)	Hor.
1055	Double	Wax-Plated Bellows	143 gm (5.0 oz.)	Hor.
1056	Double	Wax-Plated Bellows	143 gm (5.0 oz.)	Hor.
1057	Double	Wax-Plated Bellows	143 gm (5.0 oz.)	Hor.
1058	Double	Wax-Plated Bellows	143 gm (5.0 oz.)	Hor.
1059	Double	Wax-Plated Bellows	143 gm (5.0 oz.)	Hor.
1060	Double	Wax-Plated Bellows	143 gm (5.0 oz.)	Hor.
1061	Double	Wax-Plated Bellows	143 gm (5.0 oz.)	Hor.
1062	Double	Wax-Plated Bellows	143 gm (5.0 oz.)	Hor.
1063	Double	Wax-Plated Bellows	143 gm (5.0 oz.)	Hor.
1064	Double	Wax-Plated Bellows	143 gm (5.0 oz.)	Hor.
1065	Double	Wax-Plated Bellows	143 gm (5.0 oz.)	Hor.
1066	Double	Wax-Plated Bellows	143 gm (5.0 oz.)	Hor.
1067	Double	Wax-Plated Bellows	143 gm (5.0 oz.)	Hor.
1068	Double	Wax-Plated Bellows	143 gm (5.0 oz.)	Hor.
1069	Double	Wax-Plated Bellows	143 gm (5.0 oz.)	Hor.
1070	Double	Wax-Plated Bellows	143 gm (5.0 oz.)	Hor.
1071	Double	Wax-Plated Bellows	143 gm (5.0 oz.)	Hor.
1072	Double	Wax-Plated Bellows	143 gm (5.0 oz.)	Hor.
1073	Double	Wax-Plated Bellows	143 gm (5.0 oz.)	Hor.
1074	Double	Wax-Plated Bellows	143 gm (5.0 oz.)	Hor.
1075	Double	Wax-Plated Bellows	143 gm (5.0 oz.)	Hor.
1076	Double	Wax-Plated Bellows	143 gm (5.0 oz.)	Hor.
1077	Double	Wax-Plated Bellows	143 gm (5.0 oz.)	Hor.
1078	Double	Wax-Plated Bellows	143 gm (5.0 oz.)	Hor.
1079	Double	Wax-Plated Bellows	143 gm (5.0 oz.)	Hor.
1080	Double	Wax-Plated Bellows	143 gm (5.0 oz.)	Hor.
1081	Double	Wax-Plated Bellows	143 gm (5.0 oz.)	Hor.
1082	Double	Wax-Plated Bellows	143 gm (5.0 oz.)	Hor.
1083	Double	Wax-Plated Bellows	143 gm (5.0 oz.)	Hor.
1084	Double	Wax-Plated Bellows	143 gm (5.0 oz.)	Hor.
1085	Double	Wax-Plated Bellows	143 gm (5.0 oz.)	Hor.
1086	Double	Wax-Plated Bellows	143 gm (5.0 oz.)	Hor.
1087	Double	Wax-Plated Bellows	143 gm (5.0 oz.)	Hor.
1088	Double	Wax-Plated Bellows	143 gm (5.0 oz.)	Hor.
1089	Double	Wax-Plated Bellows	143 gm (5.0 oz.)	Hor.
1090	Double	Wax-Plated Bellows	143 gm (5.0 oz.)	Hor.
1091	Double	Wax-Plated Bellows	143 gm (5.0 oz.)	Hor.
1092	Double	Wax-Plated Bellows	143 gm (5.0 oz.)	Hor.
1093	Double	Wax-Plated Bellows	143 gm (5.0 oz.)	Hor.
1094	Double	Wax-Plated Bellows	143 gm (5.0 oz.)	Hor.
1095	Double	Wax-Plated Bellows	143 gm (5.0 oz.)	Hor.
1096	Double	Wax-Plated Bellows	143 gm (5.0 oz.)	Hor.
1097	Double	Wax-Plated Bellows	143 gm (5.0 oz.)	Hor.
1098	Double	Wax-Plated Bellows	143 gm (5.0 oz.)	Hor.
1099	Double	Wax-Plated Bellows	143 gm (5.0 oz.)	Hor.
1100	Double	Wax-Plated Bellows	143 gm (5.0 oz.)	Hor.

Folding Camera

Model 120/I

9x12 c.m.

Single extension

For Plates
and Film Packs

(Can be supplied also with extension for 1/2 plate)
— A well-tempered model —



Special features: Body of well-seasoned wood, inside black-painted, covered in Maroon-grained leatherette. Bellows of best quality. Harness made of nickel-plated, brass-lined and other metal parts beautifully black-enamelled. Reversible Helios View Finder. Forming frame: Hinged Patent. Forming frame of metal, covered with leatherette. Ground-glass easily interchangeable.

Accessories:

- | single metal plate holder,
- | one-division release.

Serial dimensions: 110x110x70 mm.

Weight: 22 gm.

Serial No.	Code word	1 2 3 4	Serial
1000	1000	1000	1000

Struttie

The Smallest Vest Pocket Camera

For Plates
and Film Packs

4.5x6 c.m. (2 1/4 x 2 1/4 in.)

For Plates
and Film Packs

Very small and light-weight. Very low priced. Suitable for camera for children.



Specifications: All-round body, outside and inside beautifully black-enamelled, inner parts finished in cream-colored enamel. Bellows of best quality. Lens and mounting frame nickel-plated. After winding up the lens, the lens is automatically adjusted to "Infinity". Fixed focus, an advantage for the beginner. The whole device covered in absolute rubber of the best. Helios View Finder. Fixed with 2 colored scales for vertical and horizontal division. Forming frame of nickel.

Accessories: 1 single metal plate holder.

Serial dimensions: 100x100x70 mm.

Weight: about 7 gm.

Serial No.	Code word	1 2 3 4	Serial
1000	1000	1000	1000

Folding Camera

Model 120/III

9x12 c.m.

With rack and
pinion

For Plates
and Film Packs

(Can be supplied also with extension for 1/2 plate)
— A low priced camera of good and solid execution —



Specification:

Body of well-seasoned wood, inside black-painted, covered in Maroon-grained leatherette. Bellows of best quality. Single extension. Rack and pinion focusing mechanism. Metal hardware beautifully black-enamelled. Harness and metal parts made of nickel-plated. Forming frame: Automatic helios view. U-rail frame extremely rigid, with ring and screw mechanism. Reversible Helios View Finder. Hinged Patent Forming frame of metal, covered with leatherette. Ground-glass easily interchangeable.

Accessories: 1 single metal plate holder in case,
1 one-division release.

Serial dimensions: 110x110x70 mm.

Weight: 21 gm.

Serial No.	Code word	1 2 3 4	Serial
1000	1000	1000	1000

Folding Camera

Model 120/II

10x15 c.m. (3 5/8 in.)

For Plates
and Film Packs

Single extension

(Can be supplied also with extension for Four Card size)
— Similar to model 120/II of 9x12 c.m. size —

Specifications: Body of well-seasoned wood, inside black-painted, covered in Maroon-grained leatherette. Bellows of best quality. Rack and pinion focusing mechanism. Harness and metal parts made of nickel-plated. Forming frame: Automatic helios view. U-rail frame extremely rigid, with ring and screw mechanism. Forming frame: Single extension without rack and pinion. Reversible Helios View Finder.

Accessories: 1 single metal plate holder in case,
1 one-division release.

Serial dimensions: 120x120x70 mm.

Weight: 1 gm.

Serial No.	Code word	1 2 3 4	Serial
1000	1000	1000	1000

Wara Vest Pocket

Roll Film Camera

Novelty

8-5.5 cm
2 1/2-1 1/2 in.

Novelty

For 1 J Roll Films.

A small and extremely compact Radial Camera with superb metal finish, precision workmanship throughout.



Special features: De Luxe model of superb precision. Forward focussing adjustment by means of a lever connected with spiral gear. All metal. The camera to accompany you everywhere, small and handy. Absolutely tight. Always ready for use. Tripart apparatus.

Constructional details: Body entirely of metal, covered beautifully in fine quality brown leather, also with brass accentuations. Bellows fabric of best brown leather. All metal parts brass plated. After pressing two levers on the side, the view can be extended.

Must start focussing lens "infinity" up to 1 meter distance. Large focusing scale very clear marked. Fine glass reversible view finder of the bellows type, made of optical glass. Direct view view finder. Support for sitting position. The springs are wound very easily on the side.

Accessories: 1) view finder vision.

Outside dimensions: 1-2 1/2 in x 4 1/4 in. Weight: about 11 1/2 oz.

Article No.	Code word	Item	Price	Note
328	Basic	Master Apparatus "Radial"	E 43.77/1.00	Basic
329	Basic	Leak Apparatus "Radial"	E 43.77/1.00	Basic
330	Basic	Wara Pocket Apparatus	E 42.77/1.00	Compact
331	Decor.	Leather Carrying Case		
332	Decor.	Leather Carrying Case, same look, with shoulder strap		

Metal Roll Film Camera

Wara Model 317

A Masterpiece

of precision workmanship
especially fit for the Tropical!

8.2-10.7 cm
4-1/2-1/2 in.

For Roll Films 8-11

8.2-11 cm
4 1/2-1 1/2 in.

For Roll Films 8-11

Can be used also for Stereo and Film Packer!
Radial lever focussing adjustment



An ultraviolet camera to enable the most accurate photographic view-obtaining apparatus. Simple and easy operation. Very strong - sturdy - reliable - Two types very complete.

Model 4: for Roll Films only.

Model 5: for Roll Films, Packaged Film Packs.

Constructional details: Body entirely of light

metal, covered in top grade red leather. The body of the camera is built with hand-riveted and polished stainless steel-workings. Bellows fabric of fine quality leather. Double spring lock. Attachment frame fixed integral to the body and supported by stainless steel main frame. Spring "AF" can turn with ring and inner mechanism extremely tight. Backward look and mirror of camera completely hidden by black metal. All mechanisms heavily nickel-plated. Large bellows buffer zone fabric, available in four metal and sample patterns, with steel. Double air parallel to the front plate. No frame difference. The mirror is by direct flap. The metal bellows are fixed to the camera body. The lens cover. The lens cover is in green, which can be turned out easily for loading and unloading of the spool. Two input lenses.

Accessory: The film is stored in a special... The metal bellows are fixed to the camera body. The lens cover. The lens cover is in green, which can be turned out easily for loading and unloading of the spool. Two input lenses.

Accessories: Model 4 | Lens... Model 5 | Lens...

Model	Roll film	Weight
Model 4	113mm	110g
Model 5	113mm	110g

Article No.	Code word	Item	Price	Note
333	Basic	Master Apparatus "Radial"	E 43.77/1.00	Basic
334	Basic	Leak Apparatus "Radial"	E 43.77/1.00	Basic
335	Basic	Wara Pocket Apparatus	E 42.77/1.00	Compact
336	Decor.	Leather Carrying Case		
337	Decor.	Leather Carrying Case, same look, with shoulder strap		

Leather Carrying Case... Price... The Wara Model 317... Wara Camera Co., Ltd.

Roll Film Camera

Wara Model 316
of light metal
for Roll Films 2 1/4 B

5 1/8 x 3 1/2
(2 1/2 - 164)

5 1/8 x 3 1/2
(2 1/2 - 164)

Can be carried easily in the pocket!

A precisely constructed Roll Film Camera, light and compact.

Specialty is for the Tropics



Specifications: Body of light metal. Cover and bellows of real leather. The lens is stamped from metal in one piece, and is very strong and light. Clear retractable Bellows View Finder. Focusing scale with automatic bellows scale for all distances. Base-board very solid, and when closed is held by a cork connected with the shutter for adding pressure. Spools are securely kept in position by means of pins on both sides. 2 Tripod lugs.

Quickly ready for use.

Accessories: 1 lens, 1 viewfinder release
Detailed description 2 1/2 - 2 1/2 - 115 1/2
Weight: about 15 oz.

Access No.	Code word	Lens	Mount	
3011	156	Special Adapter	1 1/2 x 1 1/2 x 1 1/2	Yellow
3012	156	Standard Adapter "Bellows"	1 1/2 x 1 1/2 x 1 1/2	Brown
3013	156	Standard Adapter "Bellows"	1 1/2 x 1 1/2 x 1 1/2	Green
3014	156	Leather Carrying Case, green, black, with shoulder strap		

Roll Film Camera

Wara-Simple
for Roll Films 2 1/4 B

5 1/8 x 3 1/2
(2 1/2 - 164)

5 1/8 x 3 1/2
(2 1/2 - 164)

Facilitating adjustment by means of rubber-roller



Special features: Very light and compact. Manipulation of camera extremely simple, ready for use. Fine focusing of subject. Spools are so pivoted that moving subject need not be done. Back closed to the body, opening and closing requires very little daylight handling.

Constructional details: Body of roll-mounted metal. Lens Multi-ribbed. Advanced and light of metal. Base-board extremely flat, constructed. Cover and bellows of real leather. Shutter and focusing heavily constructed. Supporting by an alloy pattern. Cork Shutter Release, automatic light focusing scale, automatic bellows scale, viewfinder, retractable viewfinder. Large retractable Bellows View Finder. 2 Tripod lugs.

A lens, view and stopper controls.

Access No.	Code word	Lens	Mount	
3011	156	Special Adapter	1 1/2 x 1 1/2 x 1 1/2	Yellow
3012	156	Standard Adapter "Bellows"	1 1/2 x 1 1/2 x 1 1/2	Brown
3013	156	Standard Adapter "Bellows"	1 1/2 x 1 1/2 x 1 1/2	Green
3014	156	Leather Carrying Case, green, black, with shoulder strap		

Wara Folding Reflex Camera

5 x 12 1/4

Novelty

Can be supplied with distance suitable for 1/2 plate (1 1/2 - 2 1/2) and size.

Novelty

Specialty suitable for Super-Speed Lenses



Smallest dimensions!

A Masterpiece of Precision Workmanship.

This Camera offers all the advantages of the ordinary Reflex Camera, without its drawbacks. Thoroughly sound famous. Absolute rigidity. Constructed to give full satisfaction. Elegant appearance. Quickly ready for use. All-metal body, suitable for the Tropics. Very simple manipulation, nothing to get wrong. - The Ideal Camera for Sport and Press Photography!

Constructional details: Body entirely of light metal, covered with an excellent quality of leather. Large wide opening Focusing Head. All metal parts heavily ribbed. By means of an ingeniously devised construction the allowed stress is always kept to limit. The sides of the bellows are reinforced with metal plates, that the camera when opened for use, represents a compact body. First class quality. Focal Plane Shutter adjustable for speeds up to 1/1000 second. Shutter is entirely manipulated on the outside of camera. After closing the camera lens is protected inside of the body. Lens with fine adjustment in Focusing Mirror. Focusing scale and shutter is advanced. Lens plate with sliding and zoom movement, with fixing screw. Focusing Head detachable, that the focusing screen can be exchanged easily and adjustment of other lenses is considerably facilitated. Supplied with shoulder strap for carrying. Tripod lugs. Leather carrying handle.

Accessories: 1 single plate holder of brass, with black enamel, in case.
1 Film Roll Adapter.

Access No.	Code word	Lens	Mount
3011	156	Leath. Carrying Case, green, black, with shoulder strap	
3012	156	Wara Standard Adapter	1 1/2 x 1 1/2 x 1 1/2
3013	156	Wara Standard Adapter	1 1/2 x 1 1/2 x 1 1/2
3014	156	Wara Standard Adapter	1 1/2 x 1 1/2 x 1 1/2
3015	156	Camera, standard lens	

Simple

The Camera for Beginners

4.5 x 6 cm
2 1/4 x 2 1/4 ins.

6.5 x 9 cm
2 1/2 x 3 1/2 ins.

8 x 12 cm
3 1/4 x 4 3/4 ins.

A practical, but very low priced apparatus constructed on wood base.



Near anonymous. Best workmanship. Very simple to use. The best camera on most photographers will. Fixed with an excellent sensitive lens producing sharp pictures. Fixed focus. Fine quality Ermenit Shutter (F. H. S.). Direct vision finder. Chromoglass. Supplied with 3 rough metal plate holder.

Model No.	Code word	Size of film	Weight approx.	Remarks
1000	Fuchs	4.5 x 6 cm	7 gms.	Camera as specified above
1001	Fuchs	6.5 x 9 cm	8 gms.	"
1002	Fuchs	8 x 12 cm	11 gms.	"

Box-form Roll Film Camera Wara

For Roll Films 2 1/4 x 2 1/4 ins. 6 x 9 cm For Roll Films 2 1/2 x 3 1/2 ins. 8 x 12 cm

The Ideal Camera for Beginners



A solidly constructed model particularly suitable for beginners. Although being heavy, these cameras are made on very new lines. Extreme simplicity of manipulation. Daylight loading. Always ready for use.

Constructional details: Body of covered wood, covered in Minoxipaint finish. Two class advanced lens with three stops. Automatically working Diapent Shutter. Two view finders for horizontal and upright pictures. Films are inserted on the side, thus loading can be done very quickly.

Model dimensions: 1000 1001 1002

Model No.	Code word	Size of film	Weight approx.	Remarks
1000	Fuchs	2 1/4 x 2 1/4 ins.	12 gms.	Camera as specified above
1001	Fuchs	2 1/2 x 3 1/2 ins.	15 gms.	"

Pocket Roll Film Camera Amourette

Novelty

Novelty

18 exposures on a single film speed.



Size of film: 16x11 cm
Size of film: 1.25x1.75 ins.

Camera dimensions: 11x10x4 cm
Weight: about 11 1/2 gms.

The ideal small-size camera for the amateur.

Special features: Small, elegant construction. Ready to be carried in the pocket. Always ready for action. No exposure may be made accidentally, without purposely turning part of the camera out of position, and before use the development, before the next space is started. Daylight loading. The small but extremely sharp picture may be continuously enlarged in case of loss from a very low priced apparatus.

Constructional details: Body strongly made of best steel and aluminum. Lens extremely perfect in both and extremely correct. The lens is fixed in the body to avoid any possibility of taking sharp photographs at a distance of less than one meter, but not greater, thus offering a really unexpected quality of action. Even non-film photographers find the original construction. Well made work.

Diaphragm: With lens withdrawn without the drawback of a simple construction, allowing to go through double the ordinary lens system (F. H. S.) lens of another size of 11/16, which is quite sufficient for the normal use the camera is intended for.

Shutter: Of the Ermenit type. Three speeds: 1/125, 1/250 and 1/500, fixed, as well as 1/1000 for exposure.

Finder: Folding Direct Vision Finder.

Hooking device: A special construction built below the main body against some exposure work.

Model No.	Code word	Size of film	Weight approx.	Remarks
1000	Fuchs	Special Aperture	16x11 cm	Camera (No. 1000, 1001, 1002)
1001	Fuchs	Shutter (Ermenit)	16x11 cm	"
1002	Fuchs	Shutter (Ermenit)	16x11 cm	"
1003	Fuchs	Same like camera		
1004	Fuchs	Film Speed Measurement		
1005	Fuchs	Direct-light Camera System (Ermenit)		

Important: See Workstation Chromograph film and its work.

Wara Cinema Camera

with Super-Speed 1/2.7 Anastigmat lens
for Amateurs



Daylight loading!

Take Standard
Size Film!

Double Anastigmat
Lens!

Daylight loading!

Take Standard
Size Film!

Weight
about 1 lb.

See light — Flexible workability — Simple manipulation

The Smallest Cinema Camera of the Future

Special features: The Wara Cinema Camera takes Standard size film. The film can be drawn through any camera projector. The camera is of a thoroughly reliable construction, and its mechanism is so simple that even beginners can operate it successfully without having any special knowledge of motion picture photography. It is easily transportable to get cinematographic results.

The Wara Cinema Camera is very easy to operate. It has an ordinary focusing wheel or Bellows Focus control of great quality. It contains a separate provision with flexible mechanism, to make of the view lens, anastigmat, and correct as far as possible for motion. It is fitted with an excellent 1/2.7 Super-Speed Anastigmat lens producing cinematographically sharp and brilliant pictures. Fitted with Direct Vision Bellows Focus, Focusing Wheel, Indicator showing commencement of film. Tripod base.

The camera is distinguished by its absolutely accurate and thoroughly easy loading. Due to its extreme rigidity and wonderful construction there are no vibrations when using a bellows focus stand, you don't need the heavy stand ordinarily used for other camera projectors. — The Wara Cinema camera is the only Cinema movie camera camera available with a rotating front glass shutter, which permits of making full use of the maximum speed of the lens. — You can get four double over 1/2 film pictures. — The Wara Cinema Camera has no film holder, the loading and unloading of which is troublesome and often causes delay especially when you are in a particular hurry. Instead of the front and camera glass the work the use without Bellows Focus Camera, using 1/2 Super-Speed 1/2.7 lens, which can eliminate need for any front and Bellows Focus. Film starts at instant and takes out to daylight in a few seconds. — A set-down as well as a bellows system are attached to every camera to enable the loading and unloading of film. — Within limits the Wara Cinema Camera — due to its rigid and reliable construction — is easy to use as well as its other cinematographic qualities and used features — is designed to further amateur cinematography considerably. For also professional operators will find the Wara Cinema Camera very reliable for their special scenes and interesting incidents.

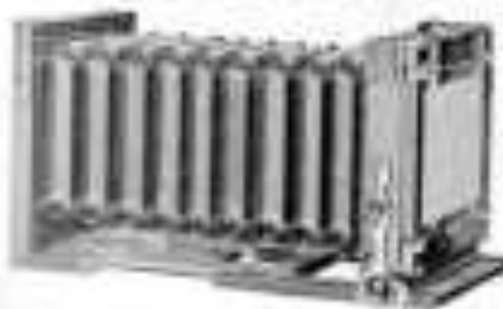
Field Camera

Model 183

Rugby Style made of strong African hardwood, or rubber polished, with double anastigmat lens

A low priced camera of fine workmanship

Constructional details: Camera and slides made of strong African hardwood, fully brass lined, rubber polished. Mountings of solid brass fully polished and lacquered. Double anastigmat with double rack and pinion. Large handy prism back with lens screen. Focusing frame built with double hinges, reversible for horizontal and vertical pictures, with horizontal sliding movement. Low board with strong sliding and cross movement, also detachable. Double extension bellows of best



with camera of solid lenses. Carrying handle of strong leather. Tripod base.

Accessories: 5 hard anastigmat 1/2.7 slides (also hard-focus type can be supplied at an extra cost.)

1 spare lens board

These cameras are manufactured in Birmingham, Great Britain, but I should like to be supplied with double controls, suitable for daylight glass doors at extra price.

Model No.	Slide Size	Size	Camera as shown specified	Weight complete
183	1 1/2 in.	12 1/2 x 18 cm.	Camera as shown specified	about 7 1/2 lbs.
183	1 1/2 in.	18 x 24 cm.	—	— 8 lbs. 10 oz.
184	2 in.	15 x 24 cm.	Camera with 1/2.7 lens	—
185	2 in.	18 x 24 cm.	—	—
186	2 in.	11 x 18 cm.	—	—
187	2 in.	18 x 24 cm.	—	—

Details for these cameras and slides on page 34 B of this Catalogue.

For Camera Carrying Cases see page 35.

Field Camera Model 183

Square Style of Mahogany, lightly polished.
— First class workmanship —
+ Double extension +



Specifications:

Camera and slide made of mahogany, lightly polished and fully brass lined. Heavy mountings of solid brass heavily polished and lacquered. Double extension with double rack and pinion. 8/30mm cut back. Large heavy prism lens with strong lens. Processing frame lined with double layers, removable for horizontal and vertical pictures, with horizontal sliding mechanism. Double extension allows of fast culture with extension of end loader. Strong carrying handle of leather. Dark slides with brass covers. — The 24x36 cm model is exceptionally strongly made, and fitted with extra strong lens mountings. — The 32x45 cm model is only supplied with special adapter and its single oval plate holder in case. —

Accessories: 1 hand made D-D slide, silver back form type can be supplied as an extra cost.
1 spare lens board.

These cameras are manufactured in Continental glass only, but if desired can be supplied with such various suitable for English glass ones at some prices.

Model No.	Slide Size	Box	Camera or other special work with slide	Weight complete about
183	24x36	183	10 lbs.
184	32x45	184	12 lbs.
185	32x45	185	12 lbs.
186	32x45	186	12 lbs.
187	32x45	187	12 lbs.
188	32x45	188	12 lbs.
189	32x45	189	12 lbs.
190	32x45	190	12 lbs.
191	32x45	191	12 lbs.
192	32x45	192	12 lbs.
193	32x45	193	12 lbs.
194	32x45	194	12 lbs.
195	32x45	195	12 lbs.
196	32x45	196	12 lbs.
197	32x45	197	12 lbs.
198	32x45	198	12 lbs.
199	32x45	199	12 lbs.
200	32x45	200	12 lbs.
201	32x45	201	12 lbs.
202	32x45	202	12 lbs.
203	32x45	203	12 lbs.
204	32x45	204	12 lbs.
205	32x45	205	12 lbs.
206	32x45	206	12 lbs.
207	32x45	207	12 lbs.
208	32x45	208	12 lbs.
209	32x45	209	12 lbs.
210	32x45	210	12 lbs.
211	32x45	211	12 lbs.
212	32x45	212	12 lbs.
213	32x45	213	12 lbs.
214	32x45	214	12 lbs.
215	32x45	215	12 lbs.
216	32x45	216	12 lbs.
217	32x45	217	12 lbs.
218	32x45	218	12 lbs.
219	32x45	219	12 lbs.
220	32x45	220	12 lbs.

Look for these cameras are shown on page 14-16 of this catalogue.

Goerlitz Precision Field Cameras



Square style

Square style

Mahogany

Mahogany

A superb camera of highest precision for all branches of photographic work.

Specifications: Precision to front and back by means of front and rear plate screws. Made of best mahogany, fully brass lined. Processing frame lined with double layers, removable for horizontal and vertical pictures, with horizontal and vertical sliding mechanism. Lens board with strong 8/30mm and extra strong 8/35mm of fine glass, with higher covers. Fully lacquered brass mountings. Carrying handle of strong brass. Slide holder with mahogany body form, with single partition. Front back

Accessories: 1 Mahogany back form D-D slide.
1 spare lens board.

Model No.	Slide size	Box	Camera or special about	Weight complete about
183	Type	183-1	Camera as specified above	10 lbs.
184	Type	184-1	12 lbs.
185	Type	185-1	12 lbs.
186	Type	186-1	12 lbs.
187	Type	187-1	12 lbs.
188	Type	188-1	12 lbs.
189	Type	189-1	12 lbs.
190	Type	190-1	12 lbs.
191	Type	191-1	12 lbs.
192	Type	192-1	12 lbs.
193	Type	193-1	12 lbs.
194	Type	194-1	12 lbs.
195	Type	195-1	12 lbs.
196	Type	196-1	12 lbs.
197	Type	197-1	12 lbs.
198	Type	198-1	12 lbs.
199	Type	199-1	12 lbs.
200	Type	200-1	12 lbs.
201	Type	201-1	12 lbs.
202	Type	202-1	12 lbs.
203	Type	203-1	12 lbs.
204	Type	204-1	12 lbs.
205	Type	205-1	12 lbs.
206	Type	206-1	12 lbs.
207	Type	207-1	12 lbs.
208	Type	208-1	12 lbs.
209	Type	209-1	12 lbs.
210	Type	210-1	12 lbs.
211	Type	211-1	12 lbs.
212	Type	212-1	12 lbs.
213	Type	213-1	12 lbs.
214	Type	214-1	12 lbs.
215	Type	215-1	12 lbs.
216	Type	216-1	12 lbs.
217	Type	217-1	12 lbs.
218	Type	218-1	12 lbs.
219	Type	219-1	12 lbs.
220	Type	220-1	12 lbs.

Note of other sizes upon application.

For Camera Carrying Case see next page.

Tropical Goerlitz Field Cameras

A camera of special design, but strongly made, of best Teak, with water-proof mountings, holder of oval bottom, as well as water proof back in the backboard. — Double extension mechanism frame brass lined, and these cameras are a proof of Goerlitz precision with finishing to last perfection.

Accessories: 1 Teak back form D-D slide.
1 spare lens board.

Model No.	Slide size	Box	Camera or special about	Weight complete about
183	Type	183-1	Camera as specified above	10 lbs.
184	Type	184-1	12 lbs.
185	Type	185-1	12 lbs.
186	Type	186-1	12 lbs.
187	Type	187-1	12 lbs.
188	Type	188-1	12 lbs.
189	Type	189-1	12 lbs.
190	Type	190-1	12 lbs.
191	Type	191-1	12 lbs.
192	Type	192-1	12 lbs.
193	Type	193-1	12 lbs.
194	Type	194-1	12 lbs.
195	Type	195-1	12 lbs.
196	Type	196-1	12 lbs.
197	Type	197-1	12 lbs.
198	Type	198-1	12 lbs.
199	Type	199-1	12 lbs.
200	Type	200-1	12 lbs.
201	Type	201-1	12 lbs.
202	Type	202-1	12 lbs.
203	Type	203-1	12 lbs.
204	Type	204-1	12 lbs.
205	Type	205-1	12 lbs.
206	Type	206-1	12 lbs.
207	Type	207-1	12 lbs.
208	Type	208-1	12 lbs.
209	Type	209-1	12 lbs.
210	Type	210-1	12 lbs.
211	Type	211-1	12 lbs.
212	Type	212-1	12 lbs.
213	Type	213-1	12 lbs.
214	Type	214-1	12 lbs.
215	Type	215-1	12 lbs.
216	Type	216-1	12 lbs.
217	Type	217-1	12 lbs.
218	Type	218-1	12 lbs.
219	Type	219-1	12 lbs.
220	Type	220-1	12 lbs.

Note of other sizes upon application.

For Camera Carrying Case see next page.

Look for these cameras are shown on page 14-16 of this catalogue.

Goerlitz Indian

Field Cameras

Essential style

Hobogony



Essential style

Hobogony

Specially suitable for architectural and landscape work!
 Quality precision workmanship. Triple extension
 extension. Locked bellows.

Specifications: Tripod attachment. Camera and lens slide ready of best optician.
 150/1 lens barrel. Constructed in very practical form, so that long-focus as well as
 short-focus lenses can be used readily with. Triple extension for front and back ends and
 joints. Triple extension bellows of best leather. Fully balanced from operation.
 Focusing done front with double images, directly the horizontal and vertical controls
 with horizontal and vertical sliding movement. Lens hood with strong, light, and easy
 movement. Closing handle of strong leather. When closed, ground glass is protected
 by a special cover-plate. Shut slide front lens, with integral position. Tripod lock. Shutter

Accessories: | Hobogony lens from T.D. (also
 | easy to use)

Article No.	Lens	Shutter		Weight camera about
1000	150/1	1/100-1/1000	Camera as specified above	4 1/2 lb.
1001	150/1	1/100-1/1000	" " " " " "	4 1/2 lb.
1002	150/1	1/100-1/1000	" " " " " "	4 1/2 lb.
1003	150/1	1/100-1/1000	Camera with lens T.D. also	
1004	150/1	1/100-1/1000	" " " " " "	
1005	150/1	1/100-1/1000	" " " " " "	
1006	150/1	1/100-1/1000	Camera Lantana Lens 150/1 camera and 1/1000	
1007	150/1	1/100-1/1000	" " " " " "	
1008	150/1	1/100-1/1000	" " " " " "	
1009	150/1	1/100-1/1000	" " " " " "	
1010	150/1	1/100-1/1000	" " " " " "	
1011	150/1	1/100-1/1000	" " " " " "	
1012	150/1	1/100-1/1000	" " " " " "	

(Note: if other lens used, weight different)

Lenses for these cameras are shown on page 10.28 of this Catalogue.

Wara de Luxe

Goerlitz Precision Studio Camera

Flagship of Luxe Camera of first class precision workmanship



An up-to-date Studio Camera, technically perfect.

All movements by means of rack and pinions. This excellent
 apparatus satisfies everybody.

Series of camera stand with extensive movement, thus giving
 double support to back and front part of camera.

Accordingly the focusing lever can be used, a further advantage
 of this fine camera.

Wara Regular Projection Lantern

Size of body 11 1/2 x 11 1/2 x 10 in., height without case 11 in.



Adding low price, a good and efficient Projection Lantern. Simple for field construction. New appearance.

Body of black painted steel sheet metal, with painted door, handle and large sight-hole. Open-piston stage. Evaporator heavily nickel-plated. Dissolvable cover. Excellent ventilation. With carrying rod and carrying handle.

Condenser: 101 mm (4 in.) diameter.

Objective 1 Model A with Normal Objective 41.50 mm (1 1/2 in.) diameter
Model B with Normal Objective 34.50 mm (1 3/8 in.) diameter

Serial No.	Case used	Model	Weight
101 102	Steel Steel	A B	11 1/2 lb. 11 1/2 lb.
103	Steel	Complete Apparatus with condenser of Aluminum, Evaporator with efficient and steel, 2 open lenses, 2 covers of lens tubes and 2 lens caps including 2 open objective lenses	14 lb.
104	Steel	Complete Apparatus with 11 systems, 10 tubes, including 2 gas tubes with venturi by steel, connecting coils, and 10 pairs of valves	7 lb.
105	Steel	As for No. 103 with	1 1/2 lb.

Wara Special Projection Lantern

Size of body 11 1/2 x 10 1/2 x 9 1/2 in., height without case 11 1/2 in.



A low priced but extremely solid model. Very elegant and new look. From casting on a sliding carriage, ground plate of hard wood, with excellent open piston stage.

Body of black painted steel sheet metal with painted door, handle and large sight-hole. Mountings are heavily nickel-plated. Dissolvable cover. With carrying rod and handle. Piston carrier with two aluminum rods for lens tubes of 3.5 x 2.5 x 10 in. (1 1/4 x 1 1/4 x 4 in.) and 3.5 x 10 x 10 in. (1 1/4 x 4 x 4 in.)

Condenser: 111 mm (4 3/8 in.) diameter, with excellent ventilation.

Objective: Model A with Normal Objective 41.50 mm (1 1/2 in.) diameter
Model B with Normal Objective 34.50 mm (1 3/8 in.) diameter

Serial No.	Case used	Model	Weight
106 107	Steel Steel	A B	11 1/2 lb. 11 1/2 lb.
108	Steel	Complete Apparatus with condenser of Aluminum, Evaporator with efficient and steel, 2 open lenses, 2 covers of lens tubes and 2 lens caps including 2 open objective lenses	14 lb.
109	Steel	Complete Apparatus with 11 systems, 10 tubes, including 2 gas tubes with venturi by steel, connecting coils, and 10 pairs of valves	7 lb.
110	Steel	As for No. 108 with	1 1/2 lb.

— Wara Prima —

Enlarging and Projection Lantern



An Enlarging Lantern of Perfection. Best workmanship throughout. All working parts of polished metal. The very finest lensless made of black japanned steel sheet-metal, lined with jarred glass, heavily and large right-hand, and sliding easily on the working tracks. Carriage cut with various, detachable. Illumination by means of a quartz vessel with wire. Length of apparatus 31 cm. Oil tank follows detachable, and may be laid into the front part of the apparatus. Turn-pedal with spring, falling and rising movement. — Negative carrier stage with sliding movement, an important feature for enlarging. From 16 inch. —

The models A and B are supplied with 12-ampere negative carrier and division for the following sizes: 8.5x11, 8.5x10, and 9x12 cm (3 1/8x4 1/8, 4x4 1/8, and 4 1/8x4 1/8, inch), as well as with two negative holders for 8.5x9 and 9x12 cm (3 1/8x3 1/8, and 4 1/8x3 1/8, inch) sizes. Models C, D and E are supplied without 12-ampere negative carrier, but with 3 Model B with 6 negative holders. —

Condenser: F — Flow-Current. T — Triple Condenser. —

— Wara Prima —

Objective.

The «Wara Prima» Lantern are fitted below with Biotinized „Moser” lenses. The „Moser” represents a universal lens for projection and enlarging; it is an advanced double objective of the Biotin type. The „Moser” is fitted with such and precise focusing tubes, a set of diaphragms to use, and lens cap. Entrance diaphragm. It is fully corrected, no spherical or chromatic aberrations. No focus difference. May be used even for direct photography, but it is recommended to use the „Moser” for this purpose, as well as for enlarging, or width copy. —

No.	Code	Size	Number of	Objective	Filter	Objective	Price
		mm.	Elements			mm.	fr.
100	Flow	8.5x11	F 11-4	Moser 1.12/11	A	10x11	34
101	Flow	8.5x11	—	without objective	A	—	32
102	Flow	8.5x11	T 11-4	Moser 1.12/11	A	—	36
103	Flow	8.5x11	—	without objective	A	—	34
104	Flow	8.5x11	F 11-4	Moser 1.12/11	B	10x11	34
105	Flow	8.5x11	—	without objective	B	—	32
106	Flow	8.5x11	T 11-4	Moser 1.12/11	B	—	36
107	Flow	8.5x11	—	without objective	B	—	34
108	Flow	8.5x11	F 11-4	Moser 1.12/11	C	10x11	34
109	Flow	8.5x11	—	without objective	C	—	32
110	Flow	8.5x11	T 11-4	Moser 1.12/11	D	—	36
111	Flow	8.5x11	—	without objective	D	—	34
112	Flow	8.5x11	F 11-4	Moser 1.12/11	E	10x11	34
113	Flow	8.5x11	—	without objective	E	—	32
114	Flow	Complete	—	—	—	—	18
115	Flow	Complete	—	—	—	—	1
116	Flow	—	—	—	—	—	1
117	Flow	Strong	—	—	—	—	12
118	Flow	—	—	—	—	—	12
119	Flow	—	—	—	—	—	12
120	Flow	—	—	—	—	—	12



Wara Spotlight

The Universal Arc Lamp for Amateurs!

With 2 pairs of carbons, works off your household current.

For D. C. and A. C., 110 and 220 volts. Made for connection with your household electric light supply. Model B by the lamp system. Economical lighting over the lamp reflector. This unit portable. Very small and light. Working in every position, standing, lying or hanging. Fixed with rigid base to be fast on any object. — Adjustment very simple and can be changed at any time. —

especially well also with the well known best results. The burning of carbon holders. The "Wara Spotlight" is the only one known to connect directly to the electric system, which are very important for safe lighting. — Technically perfect. — Best construction. — Safe construction. — Although very hot when the reflector lamp reads its own maximum heat lamp. —

Suitable for Photography: Portable, variety of angles, groups, both wide and narrow, high angles, contact photography, selected location, medium, selected and authorized offices use. For contact photography in business, scientific, medical, industrial, etc. — For contact photography in business, scientific, medical, industrial, etc. —

Suitable for Cinematography: Technical films to be made of making, recording, etc. — Ideal in small rooms for projecting like use of ordinary studio use. —

A new Era in Indoor Photography

Model No.	Code word	Size	Weight	Weight complete
1000	Hand	8"	8 lbs.	15 lbs.
1001	Hand	8"	8 lbs.	15 lbs.
1002	Hand	8"	8 lbs.	15 lbs.

Model No. — Wara Spotlight — Lamp



Retouching Knives "Estima"

Made of superior steel, with carefully hand-drawn blades for extra length, with special handle of best construction. The complete set consists of 3 different knives with a special grinding stone, all tapered and beveled to the point used. Best construction throughout. —

Weight of the complete set 7 lbs.

Model No.	Code word	Weight	Weight complete
1000	Hand	8"	15 lbs.
1001	Hand	8"	15 lbs.
1002	Hand	8"	15 lbs.

Wara Ideal

Home and Educational Cinematograph

For use in Home or Theatre, Studio or Hall. — The Wara Ideal was the first Cinematograph ever to be used for projection of both films and lantern slides. — Amateurs only. Technically perfect. Precision construction.



An important feature is the precision construction of the lens system which has no moving parts and is completely self-adjusting. — This is the only Cinematograph ever to be used for projection of both films and lantern slides. —

Constructional details: All metal construction. All parts are made of the best material. — The lens system is completely self-adjusting. — The machine runs quietly and smoothly and the picture is the same size as the original and is shown in every angle. —

Starting and stopping of the movie can be done by means of a small switch. The mechanism is completely self-adjusting. — The machine is completely self-adjusting. — The machine is completely self-adjusting. —

The "Wara Ideal" Cinematograph is constructed after the standard requires being supplied in a strong, but very light carrying case, which is easily portable. —

The "Wara Ideal" Cinematograph may be used for films and lantern slides. — Heavy of light a half, can carry with others, it is not too big.

to be used also in connection with other light equipment. —

The whole outfit consists of a complete, better electric light system for the use of the projector. — The machine is completely self-adjusting. — The machine is completely self-adjusting. —

Quilt & works off your household electric light supply!

Model No.	Code word	Size	Weight	Weight complete
1000	Hand	8"	8 lbs.	15 lbs.
1001	Hand	8"	8 lbs.	15 lbs.

Model No. — Wara Ideal — Cinematograph — complete set



— Wara Standard —

Home and Educational Cinematograph

Designed for use at Home, Schools, Small Halls, and for Advertising purposes. For Standard size film.



Running forward and backward with stopping mechanism, one-point and one-light projection system.

Model N1

Made of the best materials. Simple workmanship. Mirror image movement running backward. Film adjustable by a wheel pointer. Four film guides. One film. Forward and backward movement. Mirrored camera as well as stopping mechanism. Mirror of a small cylinder. Reelholder mounted with the apparatus by means of a cable of 2 metres length. 7 feet length. Thus the screen may start and stop the cinematograph from the place near the projection screen. If desired, large rollers can be applied. The backward movement makes it possible to repeat important parts of the film to effect an advance for simple printing a better on the cylinders.

The picture can be taken for head work, allowing the projection of single pictures; this allowing screen may be moved, and the projection may easily take more pictures on the same. The picture can allow the projection of white walls of single pictures such as included with film. Backward movement and camera can be particularly important and absolutely accurate for projection of sharp and clear pictures, reduced and suitable film. There is no movement for film.

By means of a four-voltage lamp in connection with a special arrangement the Wara Standard Model N1 will produce light pictures up to 11.5 metres over 4 feet per as a distance of up to 10 metres over 20 feet. A projector equipped with such apparatus permits in connection with the usual household electric light system. It should be not apply for N. 11, a special construction instead of lantern.

Fast start and lateral move for D.C. and A.C., 100-220 volts. The apparatus being equipped with an electric lamp, and the mechanism being very simple, easy for most inexperienced people to handle. The Wara Standard is well built, simple. Always ready for use, with the utmost care suitable for lanterns, Advertising purposes, and travelling.

Day-light Projection Screen fitted to the covering case allows of projection in daylight, a feature important for advertising, travelling and the like.

Also the most exciting feature will be included with our Wara Standard Cinematograph.

Model N1

Some construction as model N1, but instead of four-voltage lamp with special mechanism, with 100 watts half watt lamp and lens changing box. As the lamp is to be replaced suitable for every voltage requires a mechanism to cut connection.

Model N1 which has otherwise all the features of model N1, will be found suitable for the smaller home projector and particularly as Advertising Cinematograph for projection on the Day-light Projection Screen.

Accessories of both models

3 Spools of water-tight, 2 fixed spools, each taking about 400 metres (about 1200 feet) of Standard size film.

1 strong wooden Carrying Case, light-brown wood, fitted with Day-light Projection Screen (German Patent)



These accessories of the carrying case (N. 11) 175/20/100

Model No.	Price	Weight	Description	Notes
1000	10/00	10	Wara Standard Cinematograph as specified above	40/100
1001	10/00	10	Do. but without mirror, with lens changing box	40/100
1002	10/00	10	Wara Standard Cinematograph as specified above	40/100
1003	10/00	10	Do. but without mirror, with lens changing box	40/100

U. S. Pat. 1,912,142
(2-2-1932)

U. S. Pat. 1,912,142
(2-2-1932)

Bobby

Box-form Roll Film Camera for Roll Films 2 1/4 B

(New Improved Model)



Very solid. Rugged finish. Constructed in solid brass. Body covered in black Macassar grain leatherette. Two Bellows View Finder. Durr View View Finder. Carrying handle. Tight-fitting lens. Easy manipulation. Flash-mount. Always ready for action. Lens with three stops. Extension for T and L. Red target on the body, opening and closing quickly.

Outside dimensions: 3 1/2" x 2 1/2" x 1 1/2"
Weight about: 1.5

Stock No.	Material	Len.	Weight
400	Chrome	Leatherette Lens 100	1.500
500a	Chrome	Single Mount 111	1.500

For our new Wide-Angle Promatic Biscular see attached leaflet.

Patented | Novelty | Patented

New lens Hood

with Holder for

Promatic Biscular and Supplementary Lenses.



Protects the lens of various light rays and adds light for working with negatives. A further advantage being combined with a special holder for Promatic Biscular and Supplementary lenses, it saves the expense of lens holder. Suitable for lenses of various diameters.

Stock No.	Club used	Diameter of lens	Suitable for Promatic of
400	Club	1 1/2 inch	12 and 10mm
500	Club	1 1/2 inch	10mm
500a	Club	1 1/2 inch	10mm

Wara

Metal Plate Holders, Film Pack Adapters and Metal Divisions

(original make Peter Bada)

get enjoyment as to quality by any other make. They have been supplied for many years to leading camera factories. Next and elegant workmanship. Only best aluminum and superior steels are used in manufacturing these plate and film pack holders. Absolute light-trapping finish obtained.

(Most exact fitting in the camera produced)

Wara Holders and Adapters cost

a little more, but anybody must admit they are worth double any other holder or adapter.

(We hold the General Monopoly of the Original Peter Bada products)

Price	Type	Series A		Series P		Series B		Series C		Series D	
		No. 1	No. 2	No. 1	No. 2	No. 1	No. 2	No. 1	No. 2	No. 1	No. 2
42x50	2 1/4 B
42x60	2 1/4 B
62x60	2 1/4 B
62x70	2 1/4 B
82x100	2 1/4 B
62x100	2 1/4 B
62x110	2 1/4 B
62x120	2 1/4 B
62x130	2 1/4 B
62x140	2 1/4 B
62x150	2 1/4 B
62x160	2 1/4 B
62x170	2 1/4 B

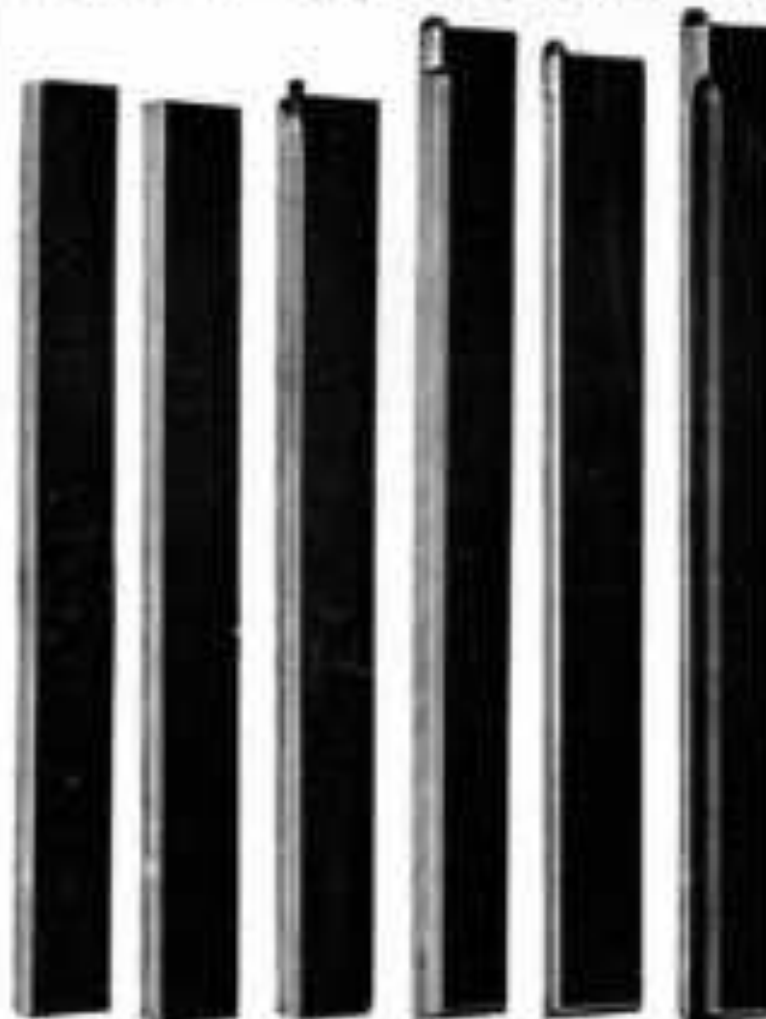
Wara Metal Divisions

For plate holders and film pack adapters of all sizes are likewise deliverable at the same excellent execution.

Important: Some patterns of our plate and film pack holders are shown on the next page. Please ask for special leaflet!

WARA Metal Plate Holders and Film Pack Adapters.

Model A Model B Model C Model D Model E Model F



Model A: Standard metal plate holder for 3 1/2 x 4 1/2 inch plates. Features a simple sliding mechanism for easy insertion and removal of plates.

Model B: Metal plate holder with a built-in film pack adapter for 35mm film. Includes a lens mount and a shutter release mechanism.

Model C: Metal plate holder with a built-in film pack adapter for 35mm film. Includes a lens mount and a shutter release mechanism.

Model D: Metal plate holder with a built-in film pack adapter for 35mm film. Includes a lens mount and a shutter release mechanism.

Model E: Metal plate holder with a built-in film pack adapter for 35mm film. Includes a lens mount and a shutter release mechanism.

Model F: Metal plate holder with a built-in film pack adapter for 35mm film. Includes a lens mount and a shutter release mechanism.

Wara Standard Roll Film Camera for Roll Films 2 1/2"

6.5 - 11 x 16
(8 - 1/2" - 10 1/2")

6.5 - 11 x 16
(8 - 1/2" - 10 1/2")

Special features: Light and portable. Very much overexposure. Flexible focusing. Quick work for one-hand loading. Quick setting on tripod. Excellent mechanical working. Back focus to the back. Simple focusing and viewing. Very practical focusing scale.

Structural details: Body of roll-film camera constructed in light aluminum alloy. Body has ground, hardened and lapped of metal. Backboard and front board in beautiful black enamel. Bellows of fine synthetic fabric. Lens as well as mounting. Mirror, viewfinder, focusing by lever-action device. Cut-down bellows type. Shutter assembly with self-cleaning device and lever-action. Shutter 1/250 to 1/2000 shutter (as to mount) can be used loading. Tripod socket. Lens cap. Lens cap.



A camera for the serious amateur!
Recommended: 1 viewfinder release.

Serial No.	Lens used	Viewfinder	Weight, approx.
1010	Opton	None	11.2 oz.
1011	Opton	Aluminum (Swampson) Release 1012 11.2 oz.	11.2 oz.
1012	Opton	Opton (Swampson) Release 1012 11.2 oz.	11.2 oz.
1013	Opton	Opton (Swampson) Release 1012 11.2 oz.	11.2 oz.
1014	Opton	Wara Model A Release 1012 11.2 oz.	11.2 oz.

6.5 - 11 x 16 (8 - 1/2" - 10 1/2") Sporting Roll Film Camera for Roll Film 2 - 1/4 and 2 - 1/8 respectively



A camera for those who like to sport.

Specifications: Body of camera constructed in light aluminum alloy. Body has ground, hardened and lapped of metal. Backboard and front board in beautiful black enamel. Bellows of fine synthetic fabric. Lens as well as mounting. Mirror, viewfinder, focusing by lever-action device. Cut-down bellows type. Shutter assembly with self-cleaning device and lever-action. Shutter 1/250 to 1/2000 shutter (as to mount) can be used loading. Tripod socket. Lens cap. Lens cap.

A very popular model!
Recommended: 1 viewfinder release.

Serial No.	Lens used	Viewfinder	Weight, approx.
1015	Opton	None	11.2 oz.
1016	Opton	Aluminum (Swampson) Release 1012 11.2 oz.	11.2 oz.
1017	Opton	Opton (Swampson) Release 1012 11.2 oz.	11.2 oz.
1018	Opton	Opton (Swampson) Release 1012 11.2 oz.	11.2 oz.
1019	Opton	Wara Model A Release 1012 11.2 oz.	11.2 oz.

Field Camera Cortex



Conical Style Real Waist Double extension

Specification: Strongly made of real walnut, non-pollished, double extension, reversible bellows of best rubber with corners of real leather, double oak and glass, ground-glass frame hinged to the body, solid brass mounting from carrying handle. Best workmanship.

Accessories: 3 double dark slides, Real or Scotchless type,
1 spare lens panel.

Article No.	Color and	Size in.		Weight about including slides
8000	Felt	8 1/2 x 11 1/2	Camera as specified above with lens panel	17 1/2 lb.
8001	Felt	8 1/2 x 11 1/2	do.	17 1/2 "
8002	Felt	8 1/2 x 11 1/2	do. for with Scotchless slide	17 1/2 "
8003	Felt	8 1/2 x 11 1/2	do. do.	17 1/2 "
8004	High	8 1/2 x 11 1/2	Slide double dark slide, Real type	
8005	High	8 1/2 x 11 1/2	do.	
8006	High	8 1/2 x 11 1/2	do. Scotchless type	
8007	High	8 1/2 x 11 1/2	do. do.	
8008	White	8 1/2 x 11 1/2	Camera Carrying Case, to hold camera and 3 slides	
8009	White	8 1/2 x 11 1/2	do.	
8010	White	8 1/2 x 11 1/2	Camera Carrying Case, to hold camera and 6 slides	
8011	White	8 1/2 x 11 1/2	do.	

Look for these cameras and slides on pages 28-29.

Field Camera Vitex



Square Style Real American Walnut Triple extension

Specification: Strongly made of real American walnut, highly polished with steel mounting. Square style. Size 8 1/2 x 11 1/2, 11 1/2 x 14 1/2, and 14 1/2 x 18 1/2 with triple extension, lens 2 1/2 x 3 1/2 in. and 3 1/2 x 4 1/2 in. with double extension. Reversible ground glass frame. Due to its long extension this camera is particularly suitable for fine glass processes and long-focus lenses. Indispensable for Architectural photography.

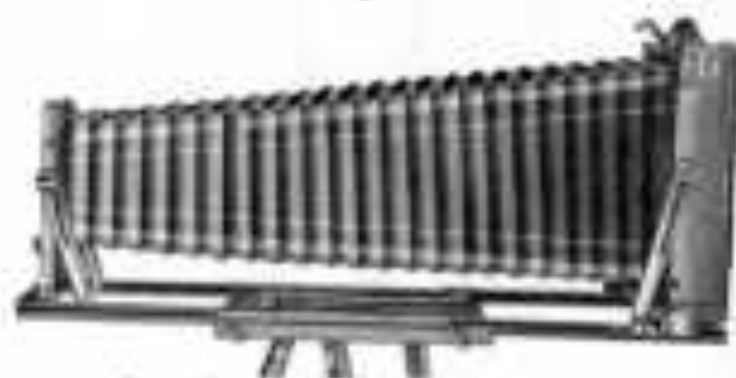
Accessories:

3 double dark slides, Real type.

Article No.	Color and	Size in.		Weight including slides
8012	Felt	8 1/2 x 11 1/2	Camera complete as specified above	17 1/2 lb.
8013	Felt	8 1/2 x 11 1/2	do.	17 1/2 "
8014	Felt	8 1/2 x 11 1/2	do.	17 1/2 "
8015	Felt	8 1/2 x 11 1/2	do.	17 1/2 "
8016	Felt	8 1/2 x 11 1/2	do.	17 1/2 "
8017	Felt	8 1/2 x 11 1/2	do.	17 1/2 "
8018	Felt	8 1/2 x 11 1/2	do.	17 1/2 "
8019	Felt	8 1/2 x 11 1/2	do.	17 1/2 "
8020	Felt	8 1/2 x 11 1/2	do.	17 1/2 "
8021	Felt	8 1/2 x 11 1/2	do.	17 1/2 "
8022	Felt	8 1/2 x 11 1/2	do.	17 1/2 "
8023	Felt	8 1/2 x 11 1/2	do.	17 1/2 "
8024	Felt	8 1/2 x 11 1/2	do.	17 1/2 "
8025	Felt	8 1/2 x 11 1/2	do.	17 1/2 "
8026	Felt	8 1/2 x 11 1/2	do.	17 1/2 "
8027	Felt	8 1/2 x 11 1/2	do.	17 1/2 "
8028	Felt	8 1/2 x 11 1/2	do.	17 1/2 "
8029	Felt	8 1/2 x 11 1/2	do.	17 1/2 "
8030	Felt	8 1/2 x 11 1/2	do.	17 1/2 "
8031	Felt	8 1/2 x 11 1/2	do.	17 1/2 "
8032	Felt	8 1/2 x 11 1/2	do.	17 1/2 "
8033	Felt	8 1/2 x 11 1/2	do.	17 1/2 "
8034	Felt	8 1/2 x 11 1/2	do.	17 1/2 "
8035	Felt	8 1/2 x 11 1/2	do.	17 1/2 "
8036	Felt	8 1/2 x 11 1/2	do.	17 1/2 "
8037	Felt	8 1/2 x 11 1/2	do.	17 1/2 "
8038	Felt	8 1/2 x 11 1/2	do.	17 1/2 "
8039	Felt	8 1/2 x 11 1/2	do.	17 1/2 "
8040	Felt	8 1/2 x 11 1/2	do.	17 1/2 "
8041	Felt	8 1/2 x 11 1/2	do.	17 1/2 "
8042	Felt	8 1/2 x 11 1/2	do.	17 1/2 "
8043	Felt	8 1/2 x 11 1/2	do.	17 1/2 "
8044	Felt	8 1/2 x 11 1/2	do.	17 1/2 "
8045	Felt	8 1/2 x 11 1/2	do.	17 1/2 "
8046	Felt	8 1/2 x 11 1/2	do.	17 1/2 "
8047	Felt	8 1/2 x 11 1/2	do.	17 1/2 "
8048	Felt	8 1/2 x 11 1/2	do.	17 1/2 "
8049	Felt	8 1/2 x 11 1/2	do.	17 1/2 "
8050	Felt	8 1/2 x 11 1/2	do.	17 1/2 "
8051	Felt	8 1/2 x 11 1/2	do.	17 1/2 "
8052	Felt	8 1/2 x 11 1/2	do.	17 1/2 "
8053	Felt	8 1/2 x 11 1/2	do.	17 1/2 "
8054	Felt	8 1/2 x 11 1/2	do.	17 1/2 "
8055	Felt	8 1/2 x 11 1/2	do.	17 1/2 "
8056	Felt	8 1/2 x 11 1/2	do.	17 1/2 "
8057	Felt	8 1/2 x 11 1/2	do.	17 1/2 "
8058	Felt	8 1/2 x 11 1/2	do.	17 1/2 "
8059	Felt	8 1/2 x 11 1/2	do.	17 1/2 "
8060	Felt	8 1/2 x 11 1/2	do.	17 1/2 "
8061	Felt	8 1/2 x 11 1/2	do.	17 1/2 "
8062	Felt	8 1/2 x 11 1/2	do.	17 1/2 "
8063	Felt	8 1/2 x 11 1/2	do.	17 1/2 "
8064	Felt	8 1/2 x 11 1/2	do.	17 1/2 "
8065	Felt	8 1/2 x 11 1/2	do.	17 1/2 "
8066	Felt	8 1/2 x 11 1/2	do.	17 1/2 "
8067	Felt	8 1/2 x 11 1/2	do.	17 1/2 "
8068	Felt	8 1/2 x 11 1/2	do.	17 1/2 "
8069	Felt	8 1/2 x 11 1/2	do.	17 1/2 "
8070	Felt	8 1/2 x 11 1/2	do.	17 1/2 "
8071	Felt	8 1/2 x 11 1/2	do.	17 1/2 "
8072	Felt	8 1/2 x 11 1/2	do.	17 1/2 "
8073	Felt	8 1/2 x 11 1/2	do.	17 1/2 "
8074	Felt	8 1/2 x 11 1/2	do.	17 1/2 "
8075	Felt	8 1/2 x 11 1/2	do.	17 1/2 "
8076	Felt	8 1/2 x 11 1/2	do.	17 1/2 "
8077	Felt	8 1/2 x 11 1/2	do.	17 1/2 "
8078	Felt	8 1/2 x 11 1/2	do.	17 1/2 "
8079	Felt	8 1/2 x 11 1/2	do.	17 1/2 "
8080	Felt	8 1/2 x 11 1/2	do.	17 1/2 "
8081	Felt	8 1/2 x 11 1/2	do.	17 1/2 "
8082	Felt	8 1/2 x 11 1/2	do.	17 1/2 "
8083	Felt	8 1/2 x 11 1/2	do.	17 1/2 "
8084	Felt	8 1/2 x 11 1/2	do.	17 1/2 "
8085	Felt	8 1/2 x 11 1/2	do.	17 1/2 "
8086	Felt	8 1/2 x 11 1/2	do.	17 1/2 "
8087	Felt	8 1/2 x 11 1/2	do.	17 1/2 "
8088	Felt	8 1/2 x 11 1/2	do.	17 1/2 "
8089	Felt	8 1/2 x 11 1/2	do.	17 1/2 "
8090	Felt	8 1/2 x 11 1/2	do.	17 1/2 "
8091	Felt	8 1/2 x 11 1/2	do.	17 1/2 "
8092	Felt	8 1/2 x 11 1/2	do.	17 1/2 "
8093	Felt	8 1/2 x 11 1/2	do.	17 1/2 "
8094	Felt	8 1/2 x 11 1/2	do.	17 1/2 "
8095	Felt	8 1/2 x 11 1/2	do.	17 1/2 "
8096	Felt	8 1/2 x 11 1/2	do.	17 1/2 "
8097	Felt	8 1/2 x 11 1/2	do.	17 1/2 "
8098	Felt	8 1/2 x 11 1/2	do.	17 1/2 "
8099	Felt	8 1/2 x 11 1/2	do.	17 1/2 "
8100	Felt	8 1/2 x 11 1/2	do.	17 1/2 "

Look for these cameras and slides on pages 28-29.

Field Camera Triplex



Control dials, Red Magnesium, Tripod extension.

Specifications: Very strongly made of real magnesium, highly polished. Fully brass lined. Extension to front and back by means of double rack and pinion function entirely rigidly. Front board with strong and even movement. Bellows of best rubber with covering of real leather. Leather covering handles. Best workmanship throughout. —

Style A with tripod lock. —

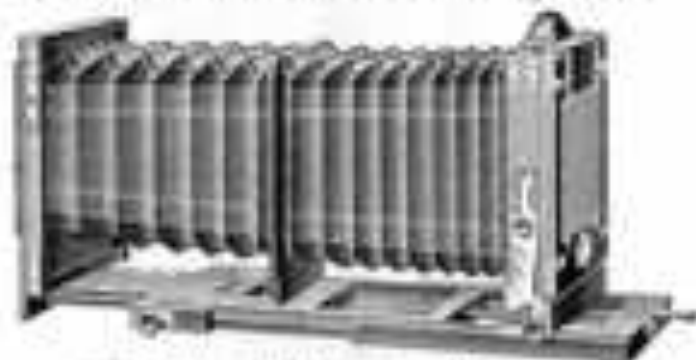
Style B with strong weather stand. Extension to be fixed to ground plate. —

Accessories: 3 double dark slides, back-focus type,
1 extra lens plate. —

Article No.	Code word	Qty. in	Price	
10000000	10000000	10000000	10000000	Camera as specified above
10000000	10000000	10000000	10000000	
10000000	10000000	10000000	10000000	
10000000	10000000	10000000	10000000	3 double dark slide, back-focus type

See Camera Catalog, Code on page 20.
Check for more details on items on page 11-12.

Field Camera * Apex *



Spent dials, Red Magnesium, Tripod extension.

Specifications: Strongly made of real magnesium, highly polished, fully brass lined. Fully extension to front and back by means of double rack and pinion worked by gear. Front cover and lens cover. Sturdy ground-plate frame integral to the body, with extension and movement fitting precisely. Sturdy, particularly strongly made, operating rig. View the lens cover from top to front. Bellows of best rubber with covering of real leather. Leather covering handles. Front mount with strong extension movement. Precision workmanship. — Data also back-focus type with tripod extension. —

Accessories: 3 double dark slides, back-focus type,
1 extra lens plate. —

Article No.	Code word	Qty. in	Price	
10000000	10000000	10000000	10000000	Camera as specified above
10000000	10000000	10000000	10000000	
10000000	10000000	10000000	10000000	3 double dark slide, back-focus type
10000000	10000000	10000000	10000000	3 double dark slide, back-focus type

See Camera Catalog, Code on page 20.
Check for more details on items on page 11-12.

